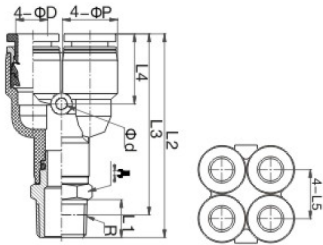


### EPRX



EPRX  
螺紋五通



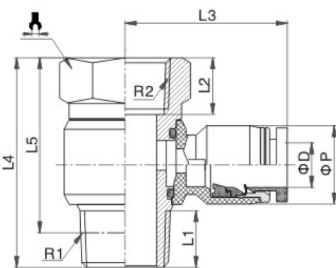
### 公制 Metric-BSPT(R)

型號 Model	ΦD	R	L1	L2	L3	L4	L5	ΦP	
EPRX4-01	4	R 1/8	7.5	43	39.5	15	11	11	12
EPRX4-02		R 1/4	10	46	40	15	11	11	14
EPRX4-03		R 3/8	10.5	47	40.5	15	11	11	17
EPRX6-01	6	R 1/8	7	46	42	16	13	13	14
EPRX6-02		R 1/4	10	48	42	16	13	13	14
EPRX6-03		R 3/8	10.5	49	43	16	13	13	17
EPRX8-01	8	R 1/8	7.5	50	46	18.5	14.5	14.5	17
EPRX8-02		R 1/4	10	52	46.5	18.5	14.5	14.5	17
EPRX8-03		R 3/8	10.5	53	46.5	18.5	14.5	14.5	17
EPRX8-04		R 1/2	13.5	56.5	48	18.5	14.5	14.5	21
EPRX10-01	10	R 1/8	7.5	60.5	56.5	22.5	18	18.5	17
EPRX10-02		R 1/4	10	63	57	22.5	18	18.5	17
EPRX10-03		R 3/8	10.5	63.5	57.5	22.5	18	18.5	17
EPRX10-04		R 1/2	13.5	67	59	22.5	18	18.5	21

### EPHF



EPHF  
回轉內外螺紋



### 公制 Metric-BSPT(R)

型號 Model	ΦD	R1	R2	L1	L2	L3	L4	L5	ΦP	
EPHF4-M5	4	M5	3.5	5	20	20	16.5	11	8	
EPHF4-M6		M6	4	5	20	21	17	11	8	
EPHF4-01		R 1/8	7	7	23	28	24	11	14	
EPHF4-02		R 1/4	9.5	9.5	25	33	27	11	17	
EPHF6-M5	6	M5	3.5	5	21.5	20	16.5	13	8	
EPHF6-M6		M6	4	5	21.5	21	17	13	8	
EPHF6-01		R 1/8	7	7	23	28	24	13	14	
EPHF6-02		R 1/4	9.5	9.5	25	33	27	13	17	
EPHF6-03	R 3/8	10.5	10.5	27	39	32.5	13	21		
EPHF6-04	R 1/2	14	14	33	46.5	38.5	14.5	24		
EPHF8-01	8	R 1/8	7	7	26.5	28	24	14.5	14	
EPHF8-02		R 1/4	9.5	9.5	29	33	27	14.5	17	
EPHF8-03		R 3/8	10.5	10.5	30.5	39	32.5	14.5	21	
EPHF8-04		R 1/2	14	14	33	46.5	38.5	14.5	24	
EPHF10-01	10	R 1/8	7	7	29	30.5	26.5	18.5	14	
EPHF10-02		R 1/4	9.5	9.5	31	33	27	18.5	17	
EPHF10-03		R 3/8	10.5	10.5	32	39	32.5	18.5	21	
EPHF10-04		R 1/2	14	14	34.5	46.5	38.5	18.5	24	
EPHF12-02	12	R 1/4	9.5	9.5	33	35	29	21	17	
EPHF12-03		R 3/8	10.5	10.5	35	39	32.5	21	21	
EPHF12-04		R 1/2	14	14	36.5	46.5	38.5	21	24	
EPHF14-04	14	R 1/2	14	14	39	46.5	38.5	26	24	
EPHF16-04	16	R 1/2	14	14	39	46.5	38.5	26	24	