

特點 Features

- *特殊的接管設計可接PU管、PE管和尼龍管，適用範圍其極廣泛。
- *採用日本進口耐用油密封圈，密封性能佳。
- *使用更純的原料來生產我們的接頭以增加它的硬度，使不易破裂且增加耐用度。
- *Special design can be applied in PU,PE and Nylon tube.
- *The material of seal-ring is Japanese viton. It with good seal fuction.
- *It made by better material to increase its firmness.

詳細規格 Specification

使用流體 Working Medium	空氣、真空、水、油 (可在無腐蝕介質下使用) Air, Vacuum, Water, Oil
使用壓力範圍 Working-pressure Range	0 ~ 11kgf/cm ² (0 ~ 1.1MPa)
使用環境及流體 Operating Temperature	-10 ~ 60°C
耐壓 Pressure resistance	1.1MPa
使用軟管 Tube	PU, PE 管及尼龍管 PU, PE tube and nylon tube
密封圈材質 Seal-ring	NBR

訂購代碼 Ordering Code

EPC **8** - **01** **0**

型號 Model

氣管外徑
Tube outer dia

Metric 公制 Code 代號	Size 尺寸 Dia 直徑
4	Φ4
6	Φ6
8	Φ8
10	Φ10
12	Φ12
16	Φ16

螺紋形式及尺寸
Thread size

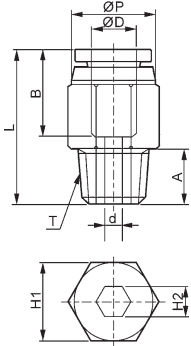
R(BSPT)	NPT	G(BSPP)
M5×0.8P	U:10~32UNF	G 01:1/8
M6×1.0P	N 01:1/8	G 02:1/4
01:1/8	N 02:1/4	G 03:3/8
02:1/4	N 03:3/8	G 04:1/2
03:3/8	N 04:1/2	
04:1/2		

套管顏色，電鍍
Sleeve color, plating
NPT: 黑色
R,G: 藍色
N: 電鍍鎳
NPT: Black
R,G: Blue
N: Nickel plat

EPC



EPC 螺紋直通
Straight (Male)



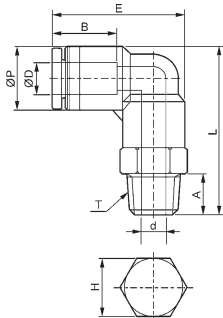
公制 Metric-BSPT(R)

型號 Model	ΦD	T (Thread)	L	A	B	H1	H2	ΦP	孔板 Orifice	單價 Unit Price
EPC4-M5	4	M5×P0.8	20.1	4	15	10	2	10	2	37
EPC4-01		PT1/8	20.3	8		10	3	10	3	35
EPC4-02		PT1/4	18.4	10		14	3	10	3	35
EPC6-M5	6	M5×P0.8	21	4	15	12	2	12	2	37
EPC6-01		PT1/8	21	8		12	4	12	4	38
EPC6-02		PT1/4	22.8	10		14	4	12	4	38
EPC6-03		PT3/8	20.8	11		17	4	12	4	50
EPC6-04		PT1/2	24.8	14		21	4	12	4	86
EPC8-01	8	PT1/8	25.4	8	18	14	5	14	5	38
EPC8-02		PT1/4	24.4	10		14	6	14	6	38
EPC8-03		PT3/8	21.4	11		17	6	14	6	51
EPC8-04		PT1/2	25.4	14		21	6	14	6	86
EPC10-01	10	PT1/8	29.5	8	22	17	5	17	5	57
EPC10-02		PT1/4	31	10		17	6	17	6	60
EPC10-03		PT3/8	28.5	11		17	8	17	8	60
EPC10-04		PT1/2	26.8	14		21	8	17	8	86
EPC12-02	12	PT1/4	34	10	22	21	6	20	6	83
EPC12-03		PT3/8	31	11		21	8	20	8	83
EPC12-04		PT1/2	33.5	14		21	8	20	8	99

EPL



EPL L型螺紋二通
Elbow 90°



公制 Metric-BSPT(R)

型號 Model	ΦD	T (Thread)	E	L	A	B	H	ΦP	d	孔板 Orifice	單價 Unit Price
EPL4-M5	4	M5×P0.8	24	26.5	4	15	10	11	2.5	2.5	44
EPL4-01		PT1/8	24	29.7	8		10		6.5	2.5	42
EPL4-02		PT1/4	26.3	32.7	10		14		8.7	2.5	45
EPL6-M5	6	M5×P0.8	25.2	38.2	4	15	12	13	2.5	2.5	44
EPL6-01		PT1/8	25.2	30.9	8		12		6.5	2.5	42
EPL6-02		PT1/4	26.9	33.9	10		14		8.5	4	47
EPL6-03		PT3/8	28.6	35.2	11		17		11.2	4	60
EPL6-04		PT1/2	30.9	38.7	14		21		14	4.5	100
EPL8-01	8	PT1/8	30.5	35.4	8	18	14	14.4	6.8	4	49
EPL8-02		PT1/4	30.5	37.4	10		14		8.2	4	49
EPL8-03		PT3/8	32.2	38.7	11		17		11.9	4	65
EPL8-04		PT1/2	34.5	42.2	14		21		13.9	4	100
EPL10-01	10	PT1/8	37.4	42	8	22	17	18.4	6.5	6.5	73
EPL10-02		PT1/4	37.4	44	10		17		8.3	6.5	76
EPL10-03		PT3/8	37.4	45	11		17		11.7	6.5	76
EPL10-04		PT1/2	39.7	48.5	14		21		14.3	7.5	108
EPL12-02	12	PT1/4	40.4	46.5	10	22	19	21	8	6.5	106
EPL12-03		PT3/8	40.4	48.5	11		19		11.5	7	106
EPL12-04		PT1/2	41.5	51	14		21		14	7.5	112