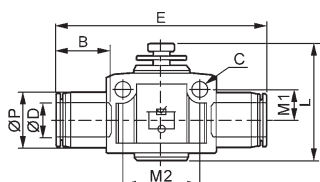


### ESA



ESA管道型  
Speed



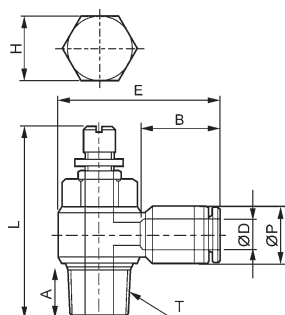
### 公制 Metric

型號 Model	ΦD	L		E	M2	ΦP	B	C	單價 Unit Price
		Min	Max						
ESA4	4	26	29	40	14	11	15	3.2	250
ESA6	6	38	44	47	20.5	13	15	4.2	250
ESA8	8	42.8	47.8	52	22	14.4	18	4.2	250
ESA10	10	48.2	53.2	62.8	26	18.4	22	4.2	400
ESA12	12	49.5	57	74	32	21	22	4.2	

### ESL



ESL 直接安裝L型  
Speed Controller



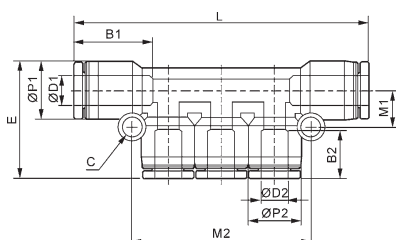
### 公制 Metric-BSPT(R)

型號 Model	ΦD	T (Thread)	E	L		A	B	H	ΦP	單價 Unit Price
				Min	Max					
ESL4-M5	4	M5×P0.8	26.1	29.5	31	4	15	8	11	280
ESL4-01		PT1/8	28.7	35.4	41.3	9		12		220
ESL4-02		PT1/4	33.1	42.6	47.5	11.6		14		220
ESL6-M5	6	M5×P0.8	26.4	29.5	31	4	15	8	13	280
ESL6-01		PT1/8	29.1	35.4	41.3	9		12		200
ESL6-02		PT1/4	34	42.6	47.5	11.6		14		200
ESL6-03		PT3/8	39.6	48	53	12.5		19		280
ESL6-04		PT1/2								420
ESL8-01	8	PT1/8	32.4	35.4	41.3	9	18	12	14.4	200
ESL8-02		PT1/4	37.3	42.6	47.5	11.6		14		200
ESL8-03		PT3/8	40	48	53	12.5		19		280
ESL8-04		PT1/2	46.6	53.5	61	15.6		24		420
ESL10-01	10	PT1/8	37	35.4	41.3	9	22	12	18.4	280
ESL10-02		PT1/4	41	42.6	47.5	11.6		14		280
ESL10-03		PT3/8	43.3	48	53	12.5		19		280
ESL10-04		PT1/2	49	53.5	61	15.6		24		420
ESL12-02	12	PT1/4	42	42.6	47.5	11.6	22	14	21	420
ESL12-03		PT3/8	45.9	48	53	12.5		19		420
ESL12-04		PT1/2	49	53.5	61	16.6		24		420

### EPK



EPK 五通  
Union



### 公制 Metric

型號 Model	ΦD1	ΦD2	L	B1	B2	ΦP1	ΦP2	M1	M2	孔板 Orifice	單價 Unit Price
EPK6-4	6	4	50.5	15	15	13	11	8	34	3.2	220
EPK8-4	8	4	53	15	15	14.4	11	9	34.4	4.2	220
EPK8-6	8	6	80	18	15	14.4	13	9	40.6	3.2	220
EPK10-6	10	6	80	22	15	18.4	14.4	10.5	42	4.2	250
EPK10-8	10	8	70	22	18	18.4	14.4	10.5	47	4.2	250