

特點 Features

- 導桿缸係氣缸與周邊設備結合而成，可有絕佳之抗旋轉，扭力及側向負載的能力。
- 可節省許多機構設計之思考，繪圖及安裝的時間，且結構簡單。
- 導桿缸一律附有磁性感應。
- 導桿缸 FGTB (U)(X) 一律附有端點可調式緩衝。
- 導桿缸較導桿治具缸可有較長之行程及較大之缸徑可用。
- $\Phi 32 \sim \Phi 63$ 氣缸使用埋入式感應開關，缸管四面均設計埋入式感應開關固定溝槽，可依實際使用需求變更感應開關安裝位置。
- 全系列均附磁。
- The guide units can be assembled to cylinders that then conform to ISO6432.
- Anti rotation guaranteed by use of external guide rods.
- Four self lube bushes or linear bearings enable high loadings and consistent movement.
- Simple to install by universal mounting holes.
- For $\Phi 32 \sim \Phi 63$ FGTB/U/X is standard with adjustable cushion.
- Flush fitting reed switch.
- Magnetic as standard.



規格 Specification

型號 Model	FGTB,FGTU					
	FGTK		FGTX			
氣缸內徑 Tube I.D.(mm)	20	25	32	40	50	63
配管口徑尺寸 Port size	G 1/8		G 1/8	G 1/4		G 3/8
行程範圍 The range of stroke (mm)	依所需訂制 Stroke by request					
使用流體 Medium	空氣 Air					
使用壓力範圍 Operating pressure range	2 ~ 7 kgf/cm ²					
周圍溫度 Ambient temperature	-5 ~ +60°C (不凍結 No freezing)					
給油 Lubrication	氣缸 Cylinder	不需給油 No required				
	導桿 Guide ※	潤滑脂 Lubricating grease				
感應開關 Sensor switch	RD-201		RCI			
感應開關固定座 Sensor switch holder	BA20	BA25	-			
	BGS20	BGS25	-			

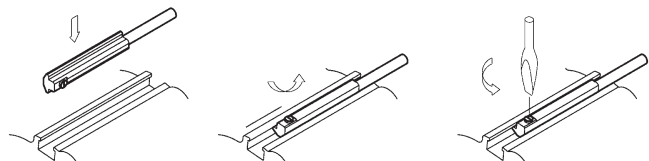
※ 須定期於注油孔處填充潤滑脂，以增加潤滑度及使用壽命。
※ Periodically refill of the lubricating grease is required to enhance the lubricative grade and its lifetime.

感應開關 Sensor switch

型號 Model	RD-201	RNA
開關型式 Switch type	有接點 Reed switch	無接點 NPN Current sinking
使用電壓範圍 Voltage range	5 ~ 220V DC/AC	5 ~ 30V DC
使用電流範圍 Current range	100mA max.	200mA max.
耐衝擊值 Shock resistance	30G	50G

型號 Model	RCI	RNI	RPI
開關型式 Switch type	有接點 Reed switch	無接點 NPN Current sinking	無接點 PNP Current sourcing
使用電壓範圍 Voltage range	5 ~ 220V DC/AC		10 ~ 30V DC
使用電流範圍 Current range	100mA max.		
耐衝擊值 Shock resistance	30G	50G	

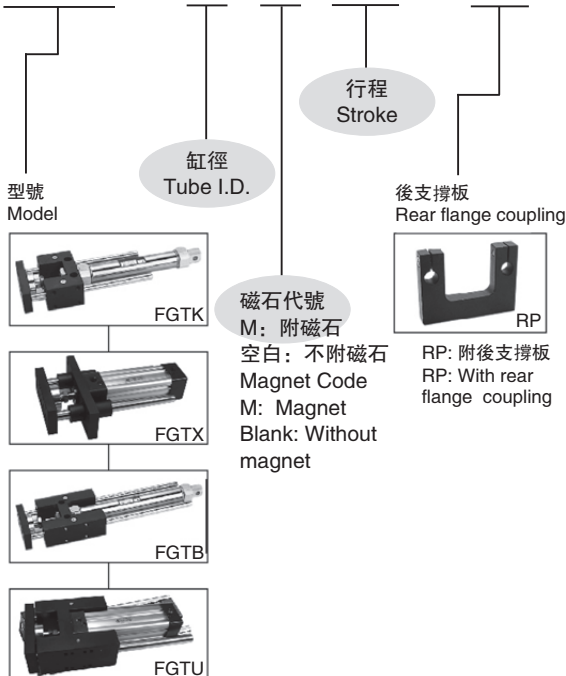
RCI 安裝方式 Mounting



FGTK	滑動軸承經濟型 Light duty type	
FGTX	滑動軸承法蘭型 Light duty flange type	
FGTB	滑動軸承重負荷型 Heavy duty (bush) type	
FGTU	線性滾珠軸承精密型 Heavy duty (linear bearing) type	

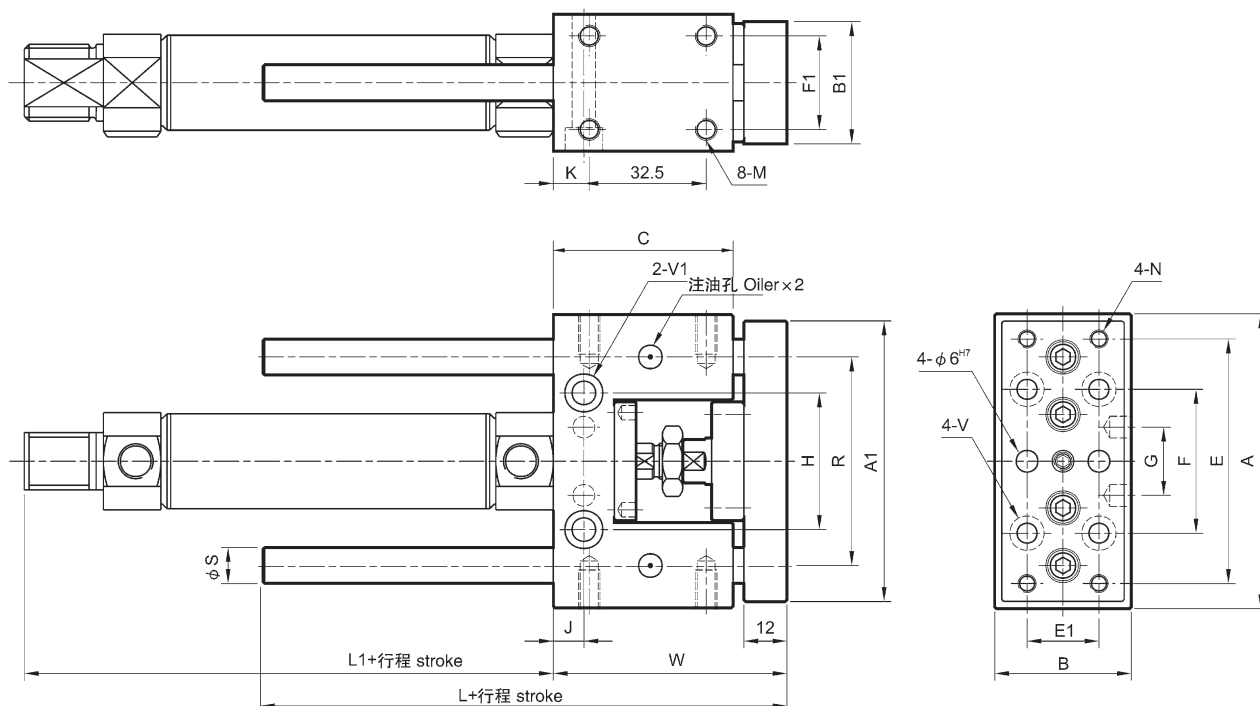
訂購代碼 Ordering Code

FGTB - 40 M 100 - RP



FGTK (含油軸襯 Oilless bush guide)

氣缸內徑 Tube I.D. $\Phi 20, \Phi 25$

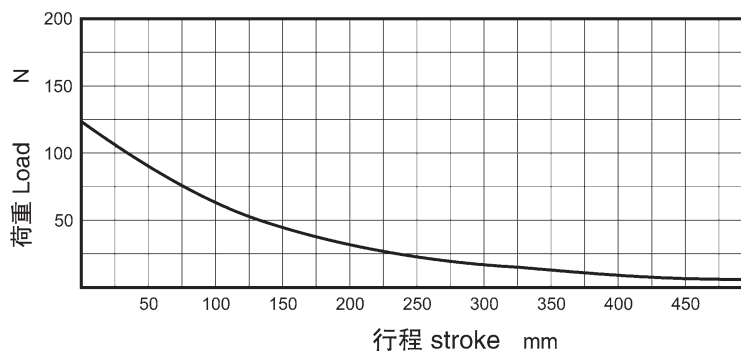
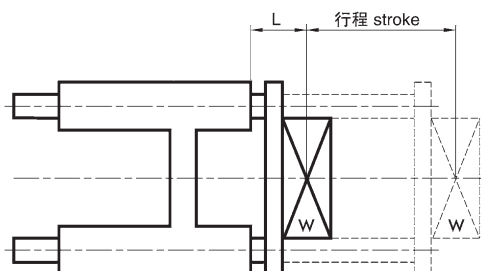


代號 Code 內徑 Tube I.D.	A	A1	B	B1	C	E	E1	F	F1	G	H	J	K	L	L1	M	N	R	S	V	V1	W
20	82	78	38	34	50	68	20	40	26	19	38	8.5	5	85	88	M6(深 D)11	M5	58	10	$\Phi 5.5, \Phi 9.5$ (深 D)5.4	$\Phi 6.5, \Phi 10.5$ (深 D)6.5	65
25	82	78	38	34	50	68	20	40	26	19	38	8.5	5	85	89	M6(深 D)11	M5	58	10	$\Phi 5.5, \Phi 9.5$ (深 D)5.4	$\Phi 6.5, \Phi 10.5$ (深 D)6.5	65

導桿氣缸荷重圖表 Maximum allowable torque moment

最大容許負荷 Max. allowable load

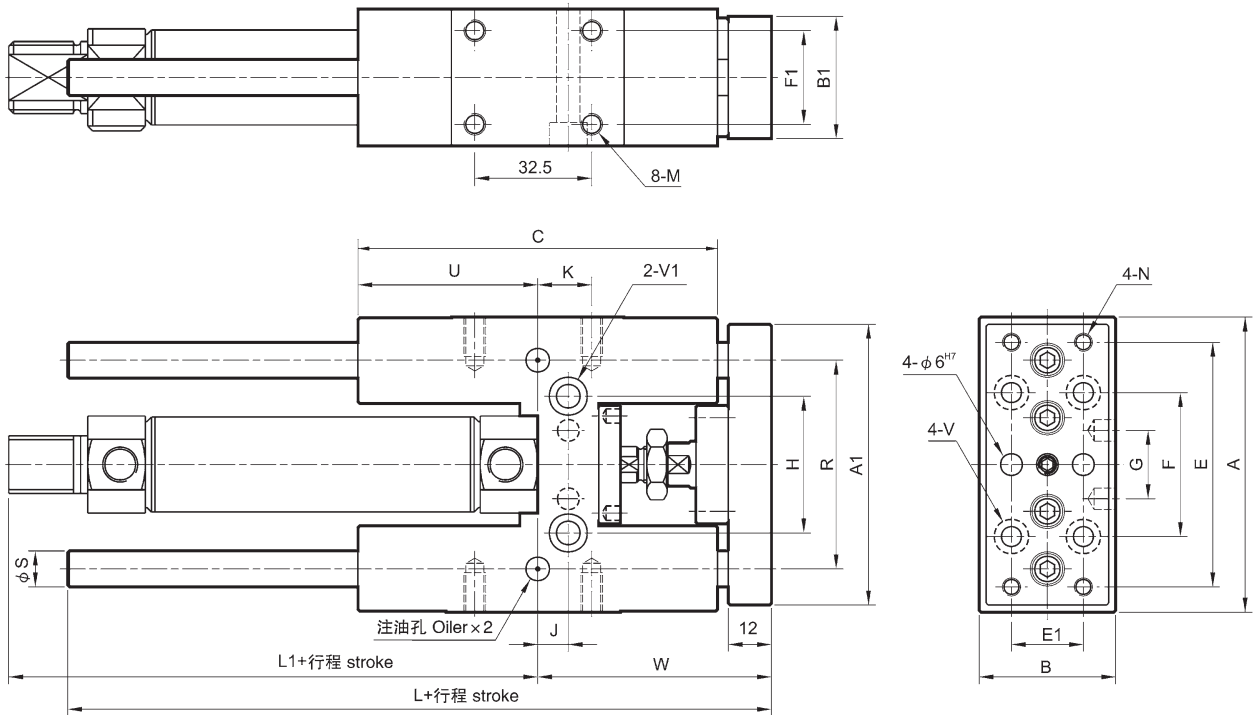
FGTK 氣缸內徑 FGTK $\Phi 20, \Phi 25$



FGTB (滑動軸承 – 高級銅合金)
(Brass bush guide)

FGTU (線性滾珠軸承)
(Linear bearing guide)

氣缸內徑 Tube I.D. $\Phi 20, \Phi 25$

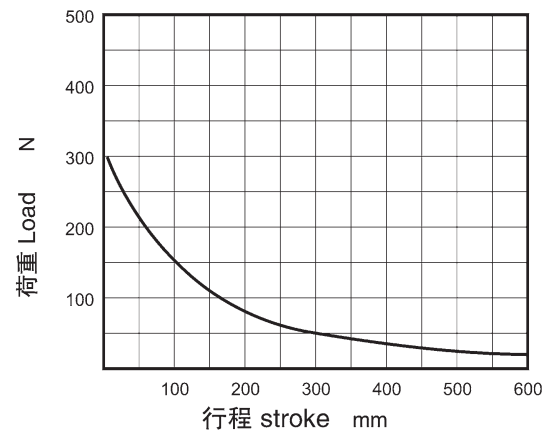
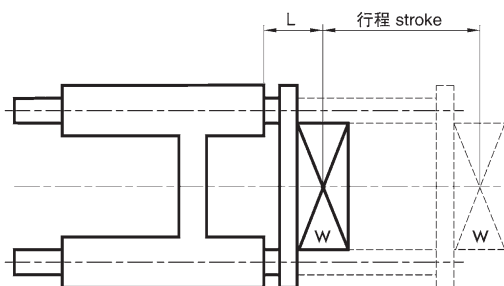


代號 Code 內徑 Tube I.D.	A	A1	B	B1	C	E	E1	F	F1	G	H	J	K	L	L1	M	N	R	S	U	V	V1	W
20	82	78	38	34	100	68	20	40	26	19	38	8.5	15	135	88	M6(深D)11	M5	58	10	50	$\Phi 5.5, \Phi 9.5$ (深D)5.4	$\Phi 6.5, \Phi 10.5$ (深D)6.5	65
25	82	78	38	34	100	68	20	40	26	19	38	8.5	15	135	89	M6(深D)11	M5	58	10	50	$\Phi 5.5, \Phi 9.5$ (深D)5.4	$\Phi 6.5, \Phi 10.5$ (深D)6.5	65

氣壓缸
Cylinder

FGT*

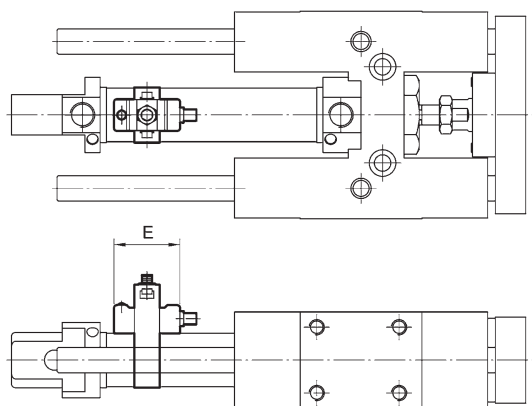
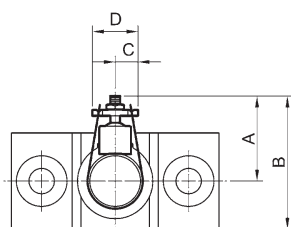
導桿氣缸荷重圖表 Maximum allowable torque moment
最大容許負荷 Max. allowable load
FGTB.FGTU 氣缸內徑 FGTB.FGTU $\Phi 20, \Phi 25$



感應開關：RD-201 Sensor switch；RD-201

感應開關束帶：PN Sensor switch band；PN

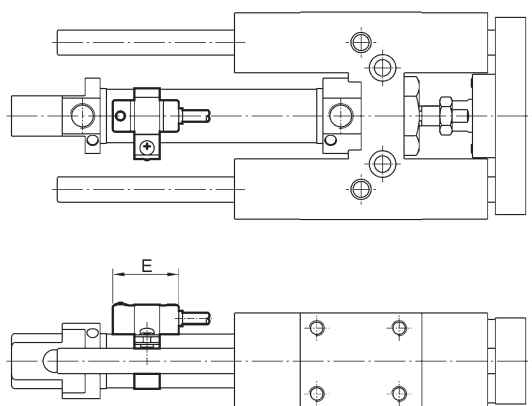
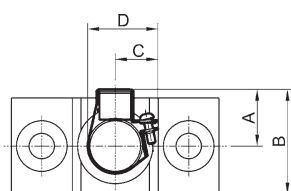
代號 Code 內徑 Tube I.D.	A	B	C	D	E
20	33	52	9	18	26
25	35.5	54.5	9	18	26



感應開關：RD-201 Sensor switch；RD-201

感應開關束帶：BGS** Sensor switch band；BGS**

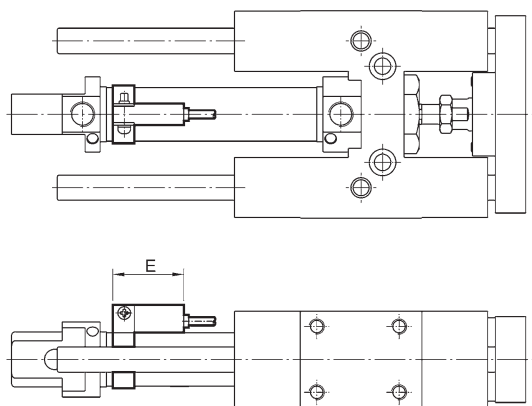
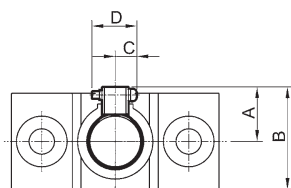
代號 Code 內徑 Tube I.D.	A	B	C	D	E
20	25	44	18	33	26
25	25.5	44.5	18.5	33.5	26



感應開關：RCM Sensor switch；RCM

感應開關束帶：BM** Sensor switch band；BM**

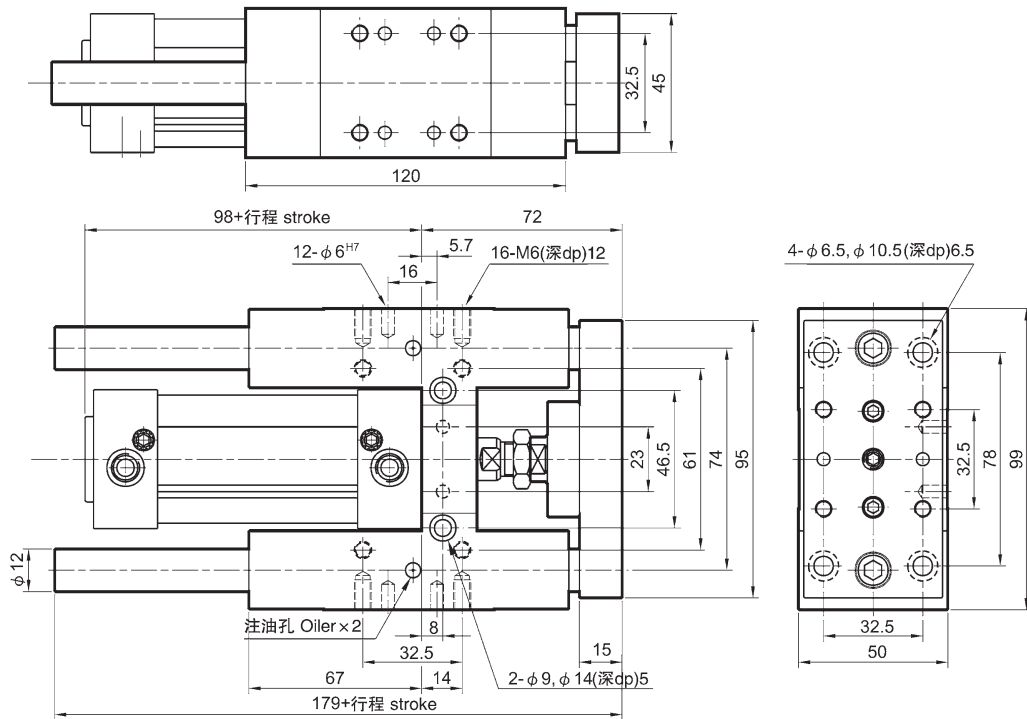
代號 Code 內徑 Tube I.D.	A	B	C	D	E
20	22	41	10	16	28
25	25	44	10	16	28



FGTB (滑動軸承 – 高級銅合金)
(Brass bush guide)

FGTU (線性滾珠軸承)
(Linear bearing guide)

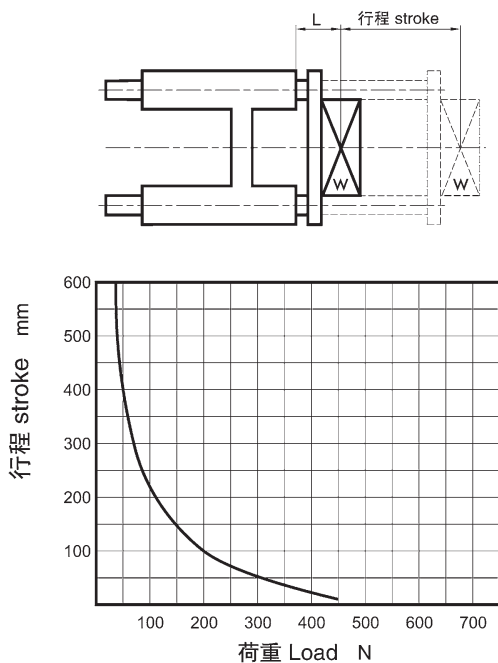
氣缸內徑 Tube I.D. $\Phi 32$



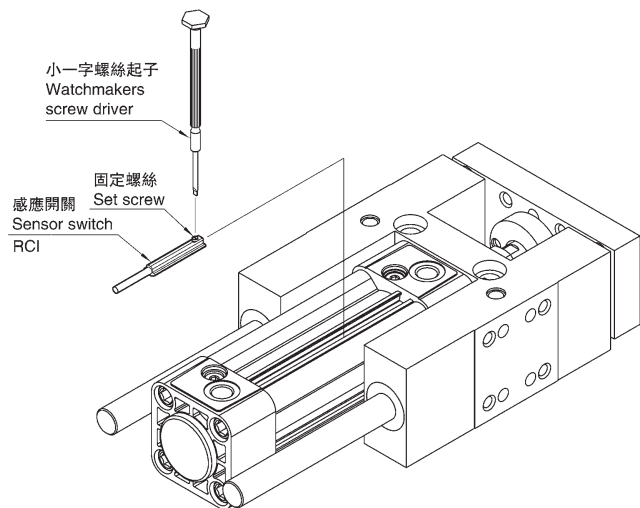
導桿氣缸荷重圖表 Maximum allowable torque moment

最大容許負荷 Max. allowable load

FGTB.FGTU 氣缸內徑 FGTB.FGTU $\Phi 32$



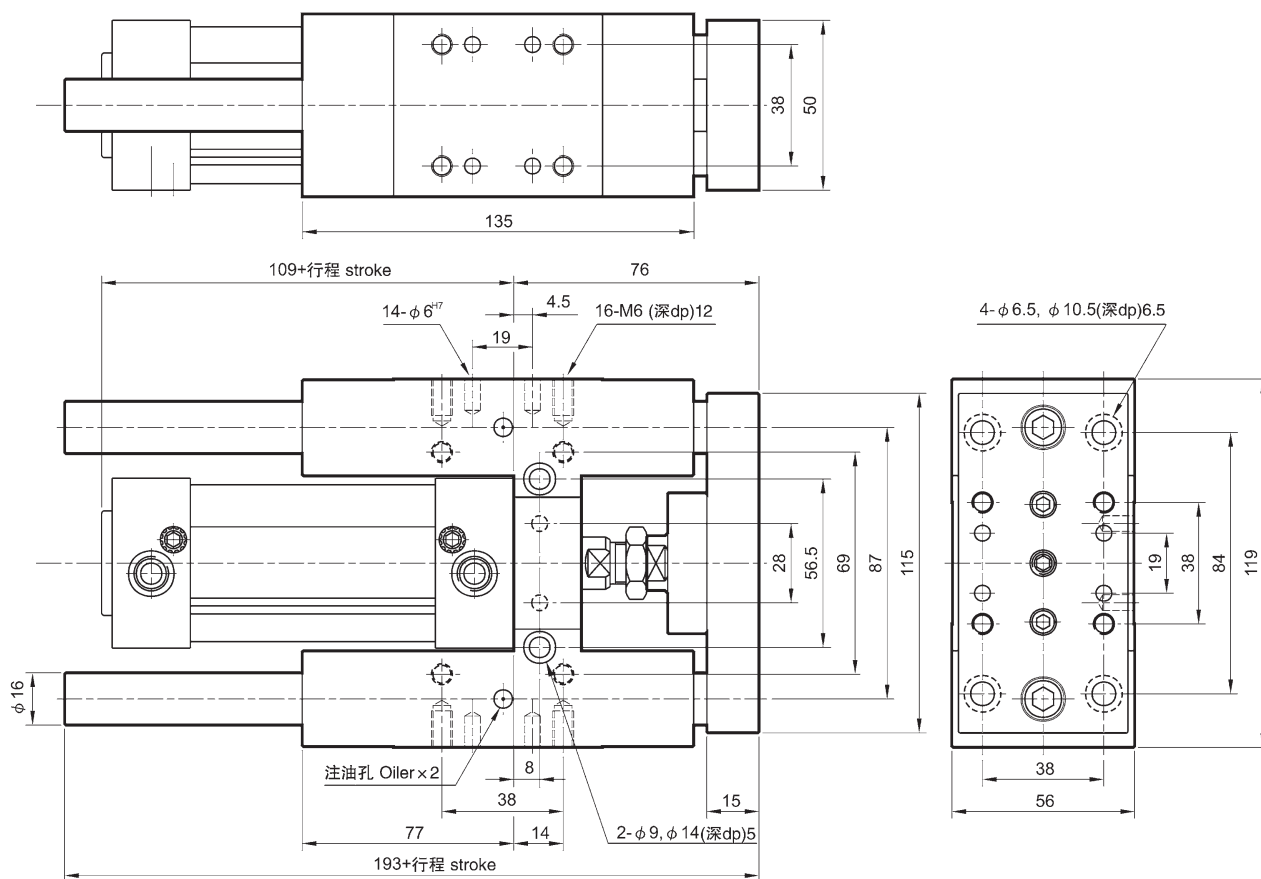
感應開關安裝 $\Phi 32 \sim \Phi 63$
Installation of sensor switch



FGTB (滑動軸承 – 高級銅合金)
(Brass bush guide)

FGTU (線性滾珠軸承)
(Linear bearing guide)

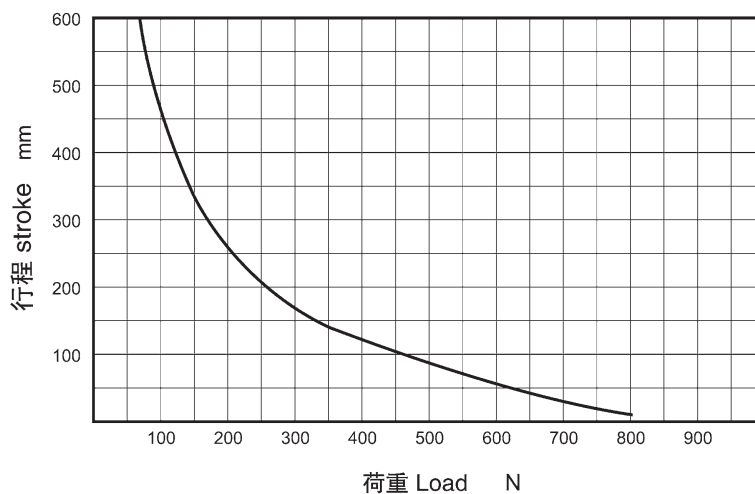
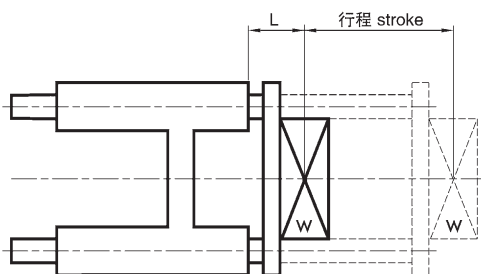
氣缸內徑 Tube I.D. $\Phi 40$



導桿氣缸荷重圖表 Maximum allowable torque moment

最大容許負荷 Max.allowable load

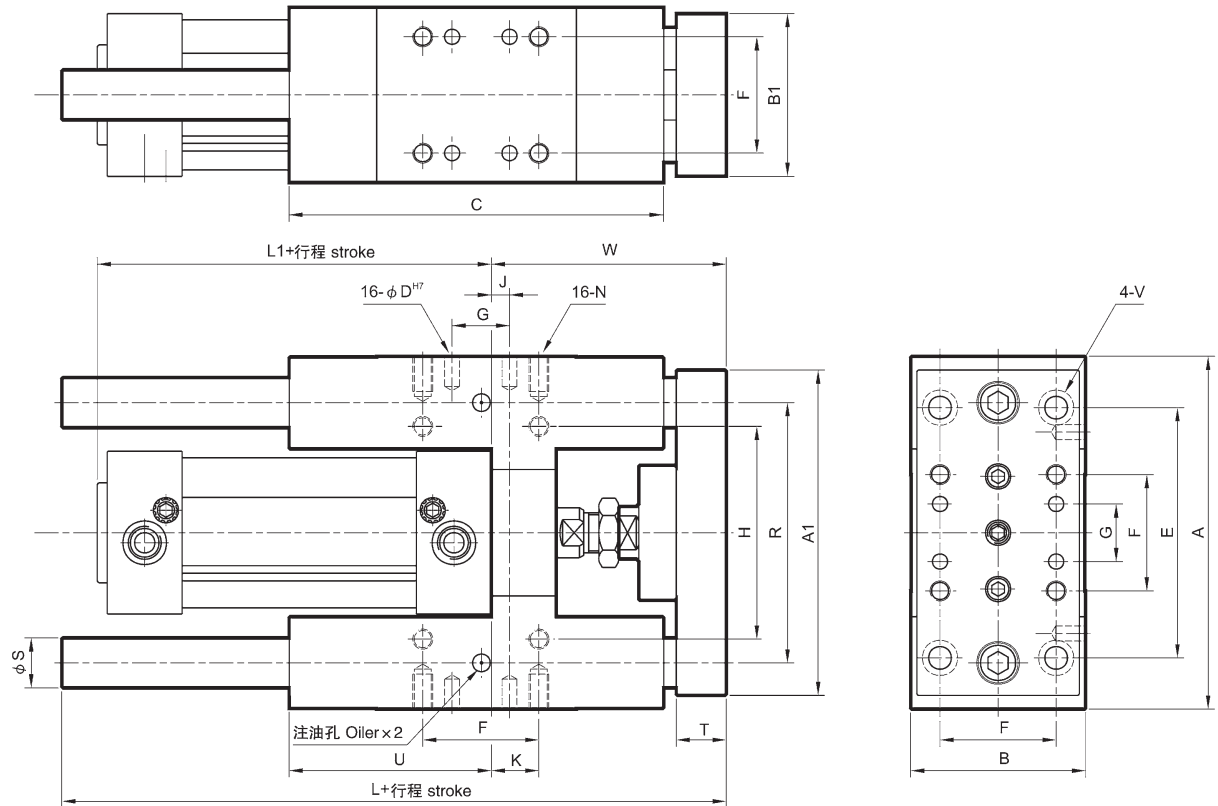
FGTB.FGTU 氣缸內徑 FGTB.FGTU $\Phi 40$



FGTB (滑動軸承 – 高級銅合金)
(Brass bush guide)

FGTU (線性滾珠軸承)
(Linear bearing guide)

氣缸內徑 Tube I.D. $\Phi 50, \Phi 63$

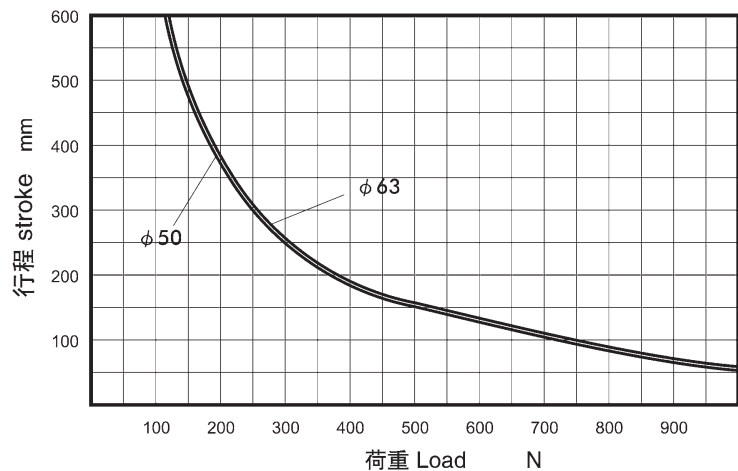
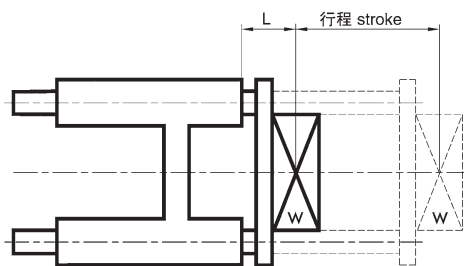


代號 Code 內徑 Tube I.D.	A	A1	B	B1	C	D	E	F	G	H	J	K	L	L1	N	R	S	T	U	V	W
50	141	135	70	65	150	6	100	46.5	23	85	7.5	19	215	110	M8(深D)14	104	20	20	81	$\Phi 9, \Phi 14$ (深D)8.5	94
63	156	150	80	75	165	6	105	56.5	28	100	5	19	230	125	M8(深D)14	119	20	20	96	$\Phi 9, \Phi 14$ (深D)8.5	94

導桿氣缸荷重圖表 Maximum allowable torque moment

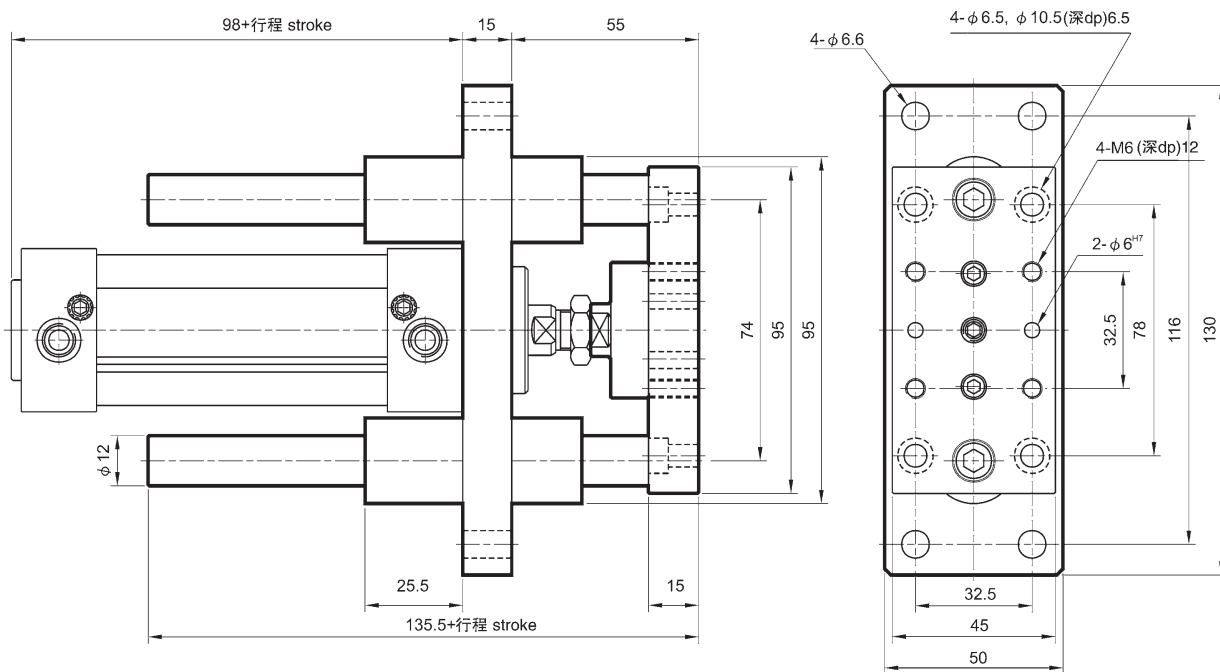
最大容許負荷 Max. allowable load

FGTB.FGTU 氣缸內徑 FGTB.FGTU $\Phi 50, \Phi 63$



FGTX (法蘭固定型 Flange type)

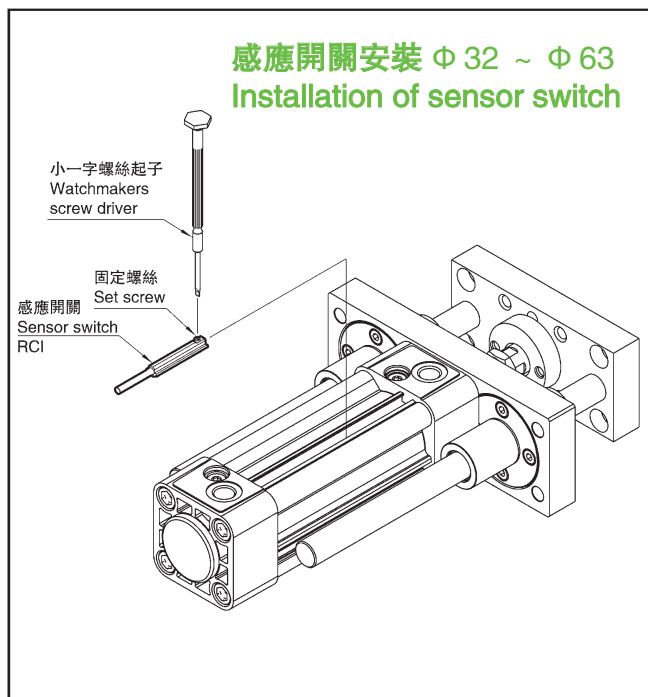
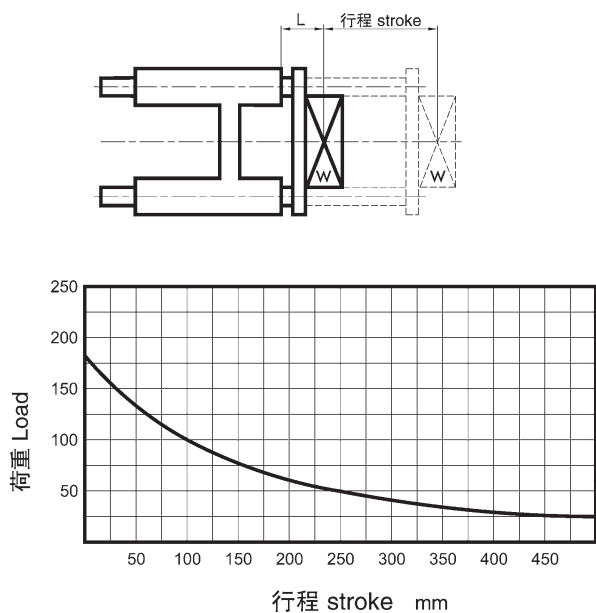
氣缸內徑 Tube I.D. Φ32



導桿氣缸荷重圖表 Maximum allowable torque moment

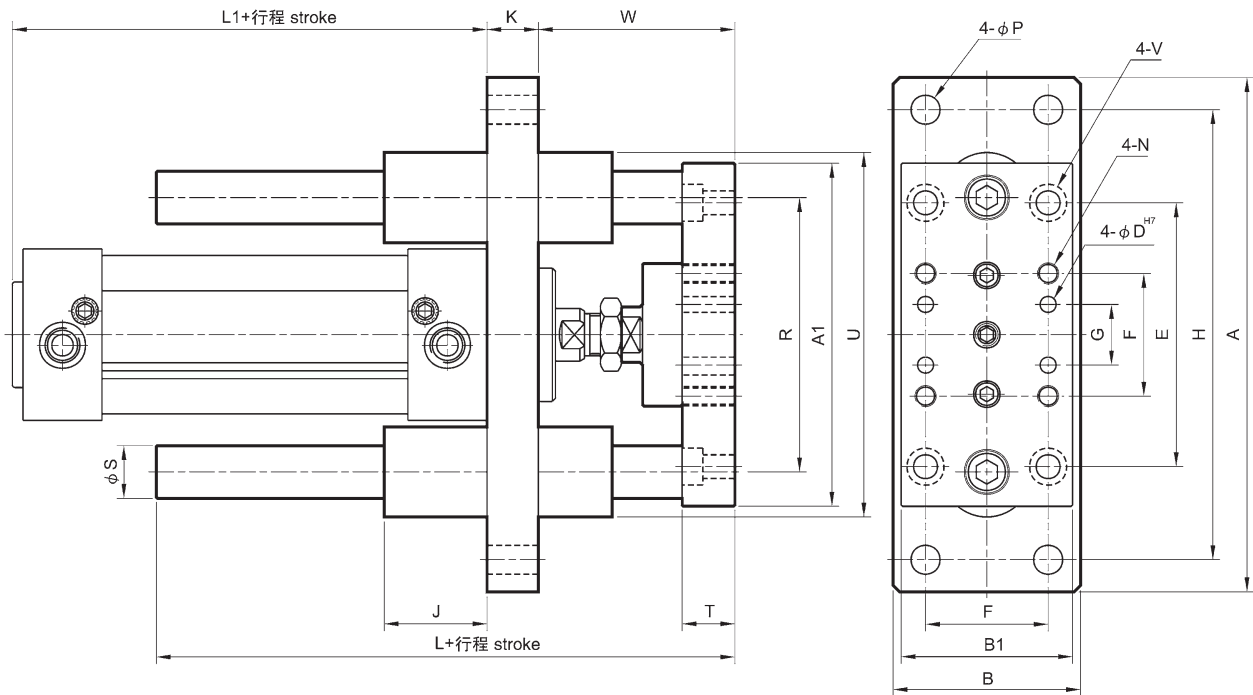
最大容許負荷 Max. allowable load

FGTX 氣缸內徑 FGTX Φ32



FGTX (法蘭固定型 Flange type)

氣缸內徑 Tube I.D. $\Phi 40 \sim \Phi 60$

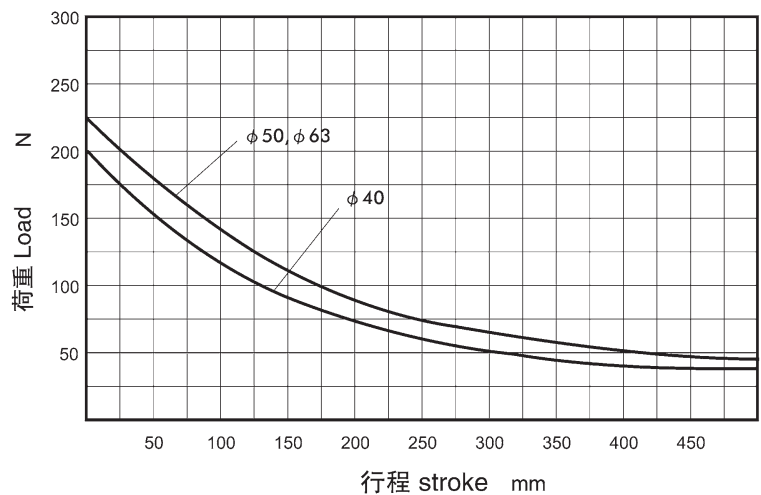
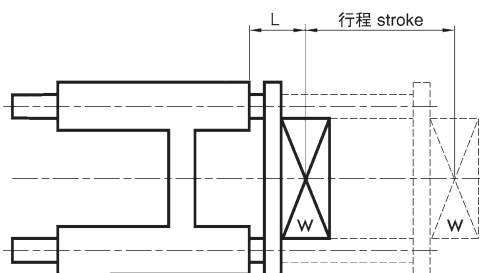


代號 Code 內徑 Tube I.D.	A	A1	B	B1	D	E	F	G	H	J	K	L	L1	N	P	R	S	T	U	V	W
40	160	115	55	54	6	84	38	19	140	32	15	148	109	M6(深 D)12	$\Phi 9$	87	16	15	115	$\Phi 6.5, \Phi 10.5$ (深 D)6.5	61
50	180	135	70	65	6	100	46.5	23	160	36	20	170	110	M8(深 D)14	$\Phi 9$	104	20	20	136	$\Phi 9, \Phi 14$ (深 D)8.5	74
63	195	150	80	75	6	105	56.5	28	175	36	20	170	125	M8(深 D)16	$\Phi 9$	119	20	20	151	$\Phi 9, \Phi 14$ (深 D)8.5	74

導桿氣缸荷重圖表 Maximum allowable torque moment

最大容許負荷 Max.allowable load

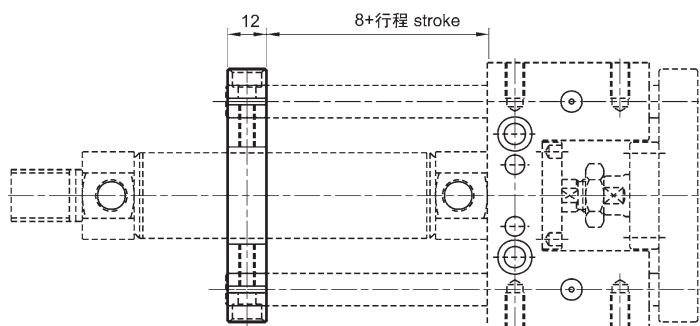
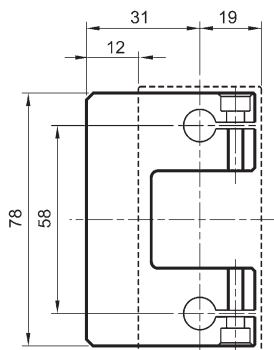
FGTX 氣缸內徑 FGTX $\Phi 40 \sim \Phi 60$



後支撐板 Rear flange coupling $\Phi 20, \Phi 25$

FGTK

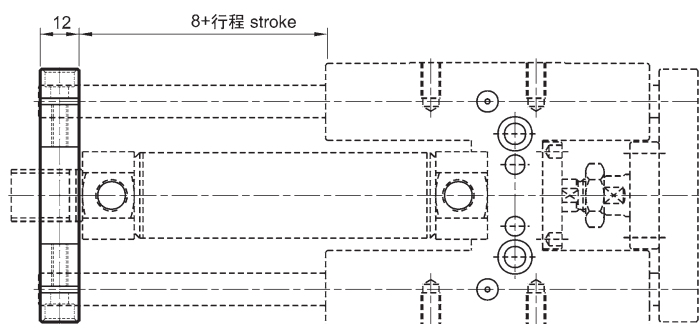
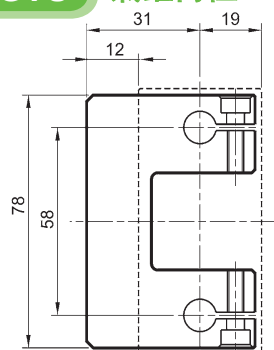
氣缸內徑 Tube I.D. $\Phi 20, \Phi 25$



FGTB

FGTU

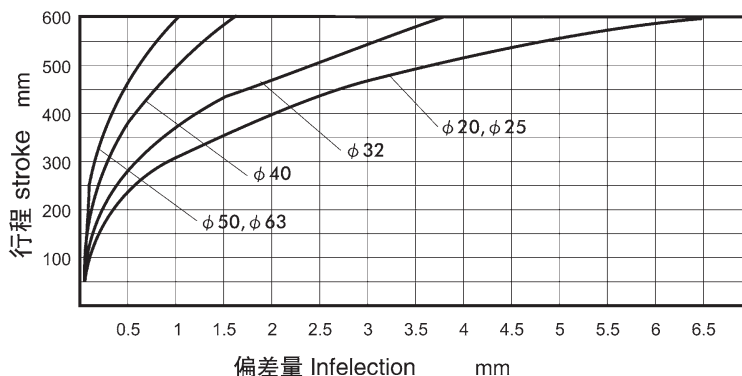
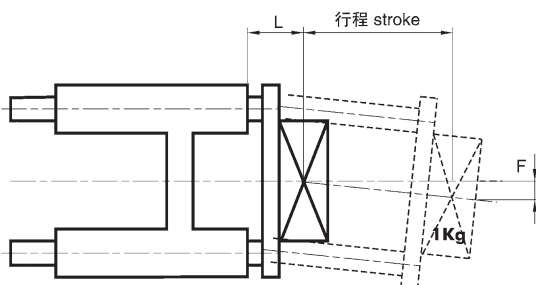
氣缸內徑 Tube I.D. $\Phi 20, \Phi 25$



導桿氣缸荷重圖表 Maximum allowable torque moment 容許負荷偏擺 Max. allowable load FGTB.FGTU

基材：高級鋁合金（附有兩支夾持用螺絲）
Building material: aluminium alloy
2 Clamps screws are included in the supply

此圖表之撓度變化是依據桿端加上 1kg 載重物後，隨行程可產生關係曲線。
Inflection of guide stems is due to their weight summed to the load of 1kg. related to the stroke.

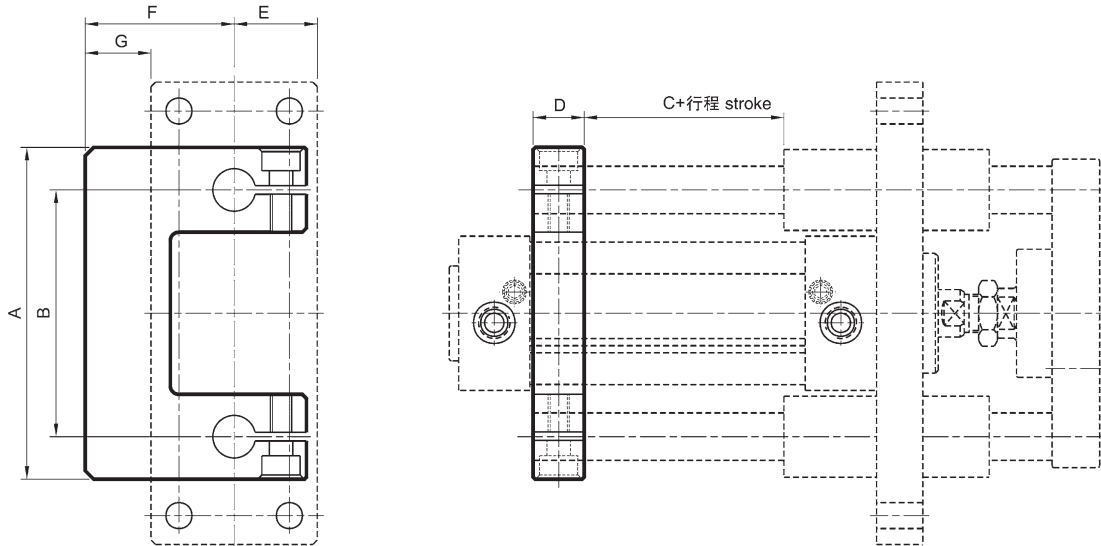


重量表 Weight of the guide cylinder

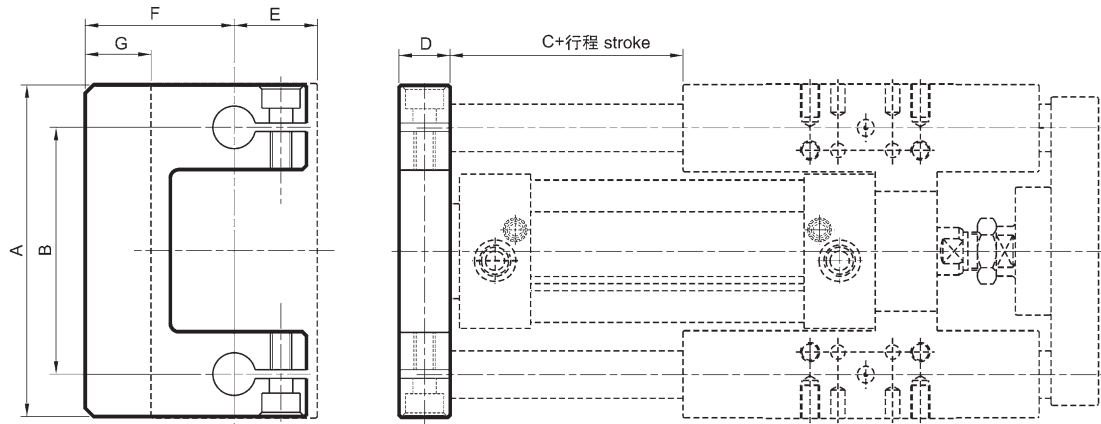
氣缸內徑 Tube I.D.	基準重量 Basic weight	行程 Stroke 25 mm 增加重量	基準重量 Basic weight	行程 Stroke 25 mm 增加重量	基準重量 Basic weight	行程 Stroke 25 mm 增加重量
	FGTK(滑動軸承 - 復合材料 Oilless bush guide)	FGTB(滑動軸承 - 銅合金 Brass bush guide)	FGTU(線性滾珠軸承 Linear bushing guide)			
20	0.690	0.050	1.090	0.050	0.967	0.050
25	0.716	0.058	1.137	0.058	1.015	0.058

後支撐板 Rear flange coupling $\Phi 32 \sim \Phi 63$

FGTX 氣缸內徑 Tube I.D. $\Phi 32 \sim \Phi 63$



FGTB FGTU 氣缸內徑 Tube I.D. $\Phi 32 \sim \Phi 63$



代號 Code 內徑 Tube I.D.	A	B	C	D	E	F	G
32	95	74	25	15	25	47	22
40	115	87	20	20	28	52.5	24.5
50	135	104	20	20	35	67.5	32.5
63	150	119	20	20	40	78	38

基材：高級鋁合金（附有兩支夾持用螺絲）
Building material: aluminium alloy
2 Clamps screws are included in the supply

重量表 Weight of the guide cylinder

氣缸內徑 Tube I.D.	基準重量 Basic weight	行程 Stroke 25 mm 增加重量	基準重量 Basic weight	行程 Stroke 25 mm 增加重量	基準重量 Basic weight	行程 Stroke 25 mm 增加重量
	FGTB(滑動軸承 - 銅合金 Brass bush guide)	FGTU(線性滾珠軸承 Linear bushing guide)	FGTB(滑動軸承 - 銅合金 Brass bush guide)	FGTU(線性滾珠軸承 Linear bushing guide)	FGTX(滑動軸承 - 銅合金 Brass bush guide)	FGTX(滑動軸承 - 銅合金 Brass bush guide)
32	2.060	0.100	1.918	0.100	1.274	0.100
40	3.423	0.159	3.113	0.159	2.082	0.159
50	5.584	0.240	5.162	0.240	3.440	0.240
63	6.816	0.250	6.390	0.250	4.221	0.250