

### 訂購代碼 Ordering Code

STCDFA - 12 - 40 M 25 - BSP

型號  
Model

1: 單軸  
2: 雙軸  
1: Single Rod  
2: Double Rod

氣缸內徑  
Tube I.D.

磁石代號  
M: 附磁石  
空白: 不附磁石  
Magnet Code  
M: Magnet  
Blank: Without magnet

行程  
Stroke

配管口螺牙  
無: PT 牙  
BSP: BSP 牙  
NPT: NPT 牙  
Port thread  
Blank: PT thread  
BSP: BSP thread  
NPT: NPT thread

作動方式 / 桿端牙型:  
Style

代號 Code	記號 Symbol	說明 Description
1 1		複動外牙 Double acting / Male thread
1 2		複動內牙 Double acting / Female thread
1 3		引入單動外牙 Single acting / Normally extended male thread
1 4		引入單動內牙 Single acting / Normally extended female thread
1 5		押出單動外牙 Single acting / Normally returned male thread
1 6		押出單動內牙 Single acting / Normally returned female thread
2 1		雙軸複動外牙 Double rod / Male thread
2 2		雙軸複動內牙 Double rod / Female thread
2 7		雙軸可調行程外牙 Double rod / Adjustable male thread
2 8		雙軸可調行程內牙 Double rod / Adjustable female thread

### 特點 Features

- 本公司追求效率成本及容易安裝使用，而設計出的產品。
- 此系列產品之安裝，全部使用沉頭孔牙設計的安裝方式，不需任何固定腳架，達到節省配置空間的要求。
- 本體使用精心挑選的鋁合金素材，經過硬質陽極處理；更具耐磨耐蝕性，配合精密的組裝技術；並且藉由嚴格地全數檢查，達到可絕對信賴的品質要求。
- 於缸體擠製時，於外圍預留裝配槽；使感應開關在安裝固定及位置調整時，均極其簡單。
- Ultra Compact, light weight and space saving cylinder.
- Wide range of bore sizes and strokes (12-100mm).
- Single and double acting available.

### 規格 Specification

型號 Model	STCDFA				
作動方式 Acting type	複動型 / 押出型 / 引入型 Double acting / Normally returned / Normally extended			複動型 Double acting	
氣缸內徑 Tube I.D. ( mm )	12	16	20	25	32 40 50 63 80 100
配管口徑尺寸 Port size	M5 × 0.8		PT 1/8	PT 1/4	PT 3/8
使用流體 Medium	空氣 Air				
使用壓力範圍 Operating pressure range kgf/cm <sup>2</sup>	複動 Double acting	0.5~9.9	0.3~9.9	0.2~9.9	
	單動 Single acting	2.0~9.9	1.5~9.9	1.0~9.9	—
耐壓力 Proof pressure	15kgf/cm <sup>2</sup>				
周圍溫度 Ambient temperature	-5°C ~ +60°C ( 不凍結 No freezing )				
感應開關 Sensor switch	RD-301, RCE, RCE1				

### 複動型 – 標準行程表

#### Double acting – Table for standard stroke

	氣缸內徑 Tube I.D.	行程 Stroke ( mm )	最大行程 ( 不附磁 ) Max. Stroke Without magne)
單軸 Single Rod	Φ12,16	5,10,15,20,25,30	300
	Φ20,25,32 Φ40,50,63	5,10,15,20,25,30,35,40,45,50	300
	Φ80,100	5,10,15,20,25,30,35,40,45,50	125
雙軸 Double Rod	Φ12,16	5,10,15,20,25,30	300
	Φ20,25,32 Φ40,50,63	5,10,15,20,25,30,35,40,45,50	300
	Φ80,100	5,10,15,20,25,30,35,40,45,50	125

※ 非標準行程亦可承製，請洽業務人員。

※ Stroke out of specification is also available.

※ Please consult us if stroke out of specification.

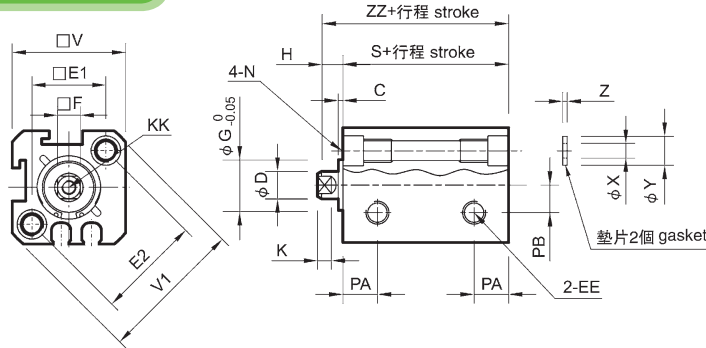
### 單動型 – 標準行程表

#### Single acting – Table for standard stroke

氣缸內徑 Tube I.D.	行程 Stroke ( mm )
Φ12, 16, 20, 25, 32, 40	5,10
Φ50	10,20

內牙型 / 外觀尺寸 Male thread / Dimensions  $\Phi 12 \sim \Phi 100$

### $\Phi 12, \Phi 16$

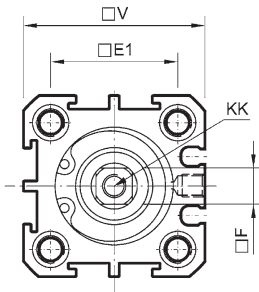


$\Phi 12 \sim \Phi 100$  長行程 Long stroke  
(無承窩孔 Without counter bore)

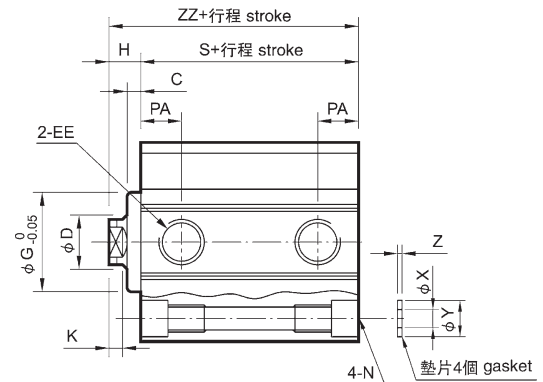
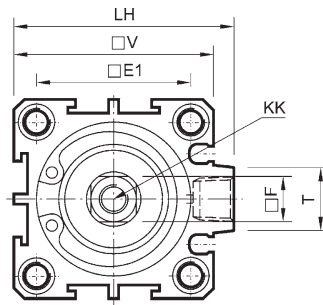


※ 附磁型：行程超過 100mm。  
※ With magnet type: the store length must be over 100mm.

### $\Phi 20, \Phi 25$



### $\Phi 32 \sim \Phi 100$



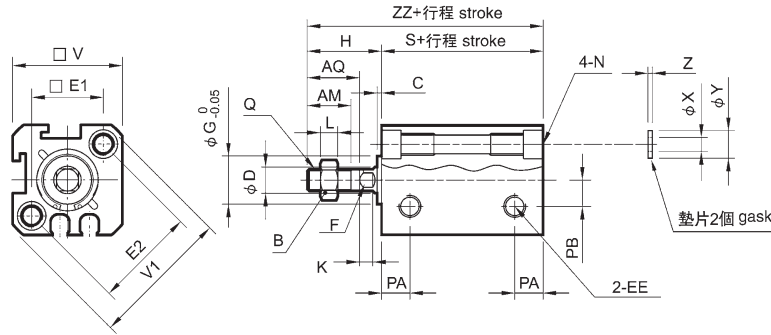
代號 Code 內徑 Tube I.D.	C	D	EE	E1	E2	F	G	H	K	KK	LH	N (固定孔 Fixed Hole)
12	1	6	M5 × 0.8	16.3	23	5	11	5	3	M3 × 0.5 × 6dp	—	6.5 × 4.5dp, 貫通 thru $\Phi 4.3$ , M5 × 0.8 × 7.5dp
16	1.5	6	M5 × 0.8	19.8	28	5	11	5.5	3	M3 × 0.5 × 6dp	—	6.5 × 4.5dp, 貫通 thru $\Phi 4.3$ , M5 × 0.8 × 7.5dp
20	1.5	8	M5 × 0.8	24	—	6	15	5.5	3	M4 × 0.7 × 8dp	—	6.5 × 4.5dp, 貫通 thru $\Phi 4.3$ , M5 × 0.8 × 7.5dp
25	2	10	M5 × 0.8	28	—	8	17	6	3	M5 × 0.8 × 10dp	—	9 × 7dp, 貫通 thru $\Phi 5.1$ , M6 × 1 × 10dp
32	3	12	PT 1/8(註 Note1)	34	—	10	22	7	3	M6 × 1 × 12dp	48.5	9 × 7dp, 貫通 thru $\Phi 5.1$ , M6 × 1 × 10dp
40	3	16	PT 1/8(註 Note1)	40	—	14	28	7	3	M8 × 1.25 × 12dp	56.5	10.5 × 8dp, 貫通 thru $\Phi 6.9$ , M8 × 1.25 × 12.5dp
50	4	20	PT 1/4(註 Note2)	48	—	17	38	9	3	M10 × 1.5 × 15dp	70	11 × 8.5dp, 貫通 thru $\Phi 6.9$ , M8 × 1.25 × 16.5dp
63	4	20	PT 1/4(註 Note2)	60	—	17	40	9	3	M10 × 1.5 × 15dp	83	11 × 8.5dp, 貫通 thru $\Phi 6.9$ , M8 × 1.25 × 16.5dp
80	5	25	PT 3/8(註 Note3)	74	—	22	45	11	4	M14 × 1.5 × 20dp	102	14 × 10.5dp, 貫通 thru $\Phi 10.5$ , M12 × 1.75 × 12dp
100	5	30	PT 3/8(註 Note3)	90	—	27	55	12	4	M18 × 1.5 × 20dp	122	17.5 × 13dp, 貫通 thru $\Phi 12.3$ , M14 × 2 × 17dp

註 1: 不附磁行程為 5mm 時, EE=M5 × 0.8  
Note 1: Without magnet with stroke=5mm, EF=M5 × 0.8  
註 2: 不附磁行程為 5mm 時, EE=PT 1/8  
Note 2: Without magnet with stroke=5mm, EF=PT 1/8  
註 3: 不附磁行程為 5mm 時, EE=PT 1/4  
Note 3: Without magnet with stroke=5mm, EF=PT 1/4

代號 Code 內徑 Tube I.D.	PA	PB	T	V	V1	X	Y	Z	不附磁型 Without magnet		附磁型 magnet	
									S	ZZ	S	ZZ
12	6.5	6	—	25	32	3.2	6.3	1	17	22	27	32
16	7	6.5	—	29	38	3.2	6.3	1	18.5	24	28.5	34
20	7.5	—	—	34	—	3.2	6.3	1	19.5	25	29.5	35
25	8	—	—	40	—	4.2	7.8	1	21	27	31	37
32	9	—	14	44	—	4.2	7.8	1	24.5	31.5	34.5	41.5
40	10	—	14	52	—	6.2	10.3	1.6	26	33	36	43
50	10	—	19	62	—	6.2	10.8	1.6	28	37	38	47
63	12	—	20	75	—	6.2	10.8	1.6	32	41	42	51
80	13	—	27	94	—	8.2	13.8	1.6	41	52	51	62
100	17	—	26	114	—	10.2	17.3	2	51	63	61	73

外牙型 / 外觀尺寸 Female thread / Dimensions  $\Phi 12 \sim \Phi 100$

$\Phi 12, \Phi 16$

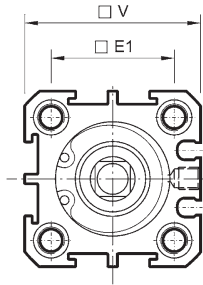


$\Phi 12 \sim \Phi 100$  長行程 Long stroke  
(無承窩孔 Without counter bore)

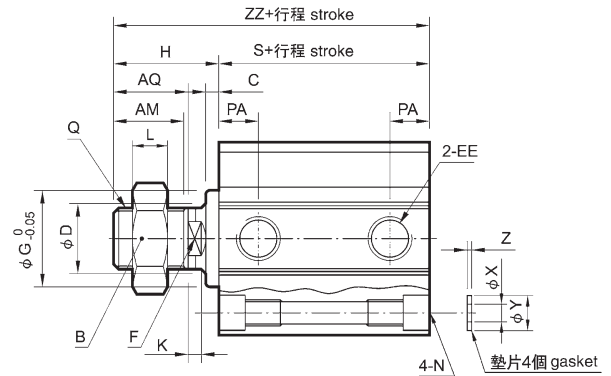
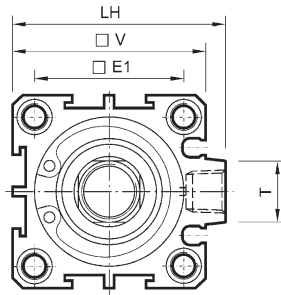


※ 附磁型：行程超過 100mm。  
※ With magnet type: the store length must be over 100mm.

$\Phi 20, \Phi 25$



$\Phi 32 \sim \Phi 100$



代號 Code 內徑 Tube I.D.	AM	AQ	B	C	D	EE	E1	E2	F	G	H	K	L	LH	N (固定孔)	
12	10	12	8	1	6	M5 × 0.8	16.3	23	5	11	17	3	4	—	6.5 × 4.5dp, 貫通 thruΦ4.3, M5 × 0.8 × 7.5dp	
16	10	12	8	1.5	6	M5 × 0.8	19.8	28	5	11	17.5	3	4	—	6.5 × 4.5dp, 貫通 thruΦ4.3, M5 × 0.8 × 7.5dp	
20	13	15	10	1.5	8	M5 × 0.8	24	—	6	15	20.5	3	5	—	6.5 × 4.5dp, 貫通 thruΦ4.3, M5 × 0.8 × 7.5dp	
25	15	17	13	2	10	M5 × 0.8	28	—	8	17	23	3	5	—	9 × 7dp, 貫通 thruΦ5.1, M6 × 1 × 10dp	
32	15	18	17	3	12	PT 1/8 (註 Note1)	34	—	10	22	25	3	6	48.5	9 × 7dp, 貫通 thruΦ5.1, M6 × 1 × 10dp	
40	25	28	22	3	16	PT 1/8 (註 Note1)	40	—	14	28	35	3	8	56.5	10.5 × 8dp, 貫通 thruΦ6.9, M8 × 1.25 × 12.5dp	
50	25	28	26	4	20	PT 1/4 (註 Note2)	48	—	17	38	37	3	11	70	11 × 8.5dp, 貫通 thruΦ6.9, M8 × 1.25 × 16.5dp	
63	25	28	26	4	20	PT 1/4 (註 Note2)	60	—	17	40	37	3	11	83	11 × 8.5dp, 貫通 thruΦ6.9, M8 × 1.25 × 16.5dp	
80	30	33	32	5	25	PT 3/8 (註 Note3)	74	—	22	45	44	4	13	102	14 × 10.5dp, 貫通 thruΦ10.5, M12 × 1.75 × 12dp	
100	35	38	35	5	30	PT 3/8 (註 Note3)	90	—	27	55	50	4	14	122	17.5 × 13dp, 貫通 thruΦ12.3, M14 × 2 × 17dp	

註 1: 不附磁行程為 5mm 時, EE=M5 × 0.8

Note 1: Without magnet with stroke=5mm, EF=M5 × 0.8

註 2: 不附磁行程為 5mm 時, EE=PT 1/8

Note 2: Without magnet with stroke=5mm, EF=PT 1/8

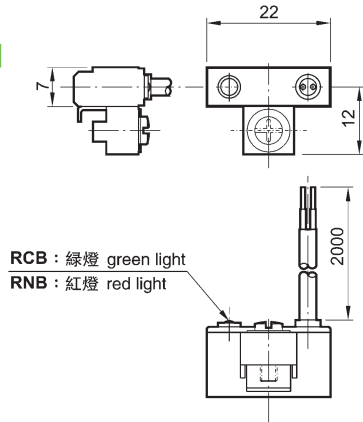
註 3: 不附磁行程為 5mm 時, EE=PT 1/4

Note 3: Without magnet with stroke=5mm, EF=PT 1/4

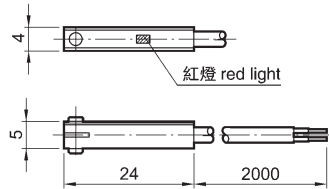
代號 Code 內徑 Tube I.D.	PA	PB	Q	T	V	V1	X	Y	Z	不附磁型 Without magnet		附磁型 Magnet	
										S	ZZ	S	ZZ
12	6.5	6	M5 × 0.8	—	25	32	3.2	6.3	1	17	34	27	44
16	7	6.5	M5 × 0.8	—	29	38	3.2	6.3	1	18.5	36	28.5	46
20	7.5	—	M6 × 1	—	34	—	3.2	6.3	1	19.5	40	29.5	50
25	8	—	M8 × 1.25	—	40	—	4.2	7.8	1	21	44	31	54
32	9	—	M10 × 1.25	14	44	—	4.2	7.8	1	24.5	49.5	34.5	59.5
40	10	—	M14 × 1.5	14	52	—	6.2	10.3	1.6	26	61	36	71
50	10	—	M18 × 1.5	19	62	—	6.2	10.8	1.6	28	65	38	75
63	12	—	M18 × 1.5	20	75	—	6.2	10.8	1.6	32	69	42	79
80	13	—	M22 × 1.5	27	94	—	8.2	13.8	1.6	41	85	51	95
100	17	—	M26 × 1.5	26	114	—	10.2	17.3	2	51	101	61	111

## 外觀尺寸 Dimensions

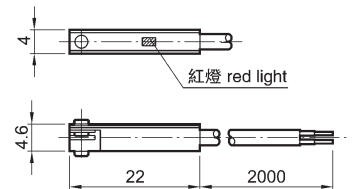
**RD-301  
RNB**



**RCE**

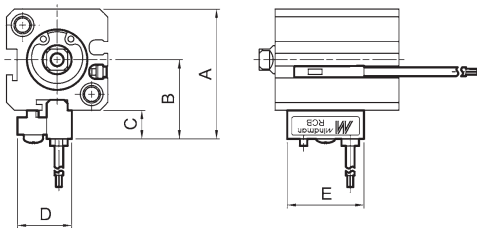


**RCE1  
RNE**

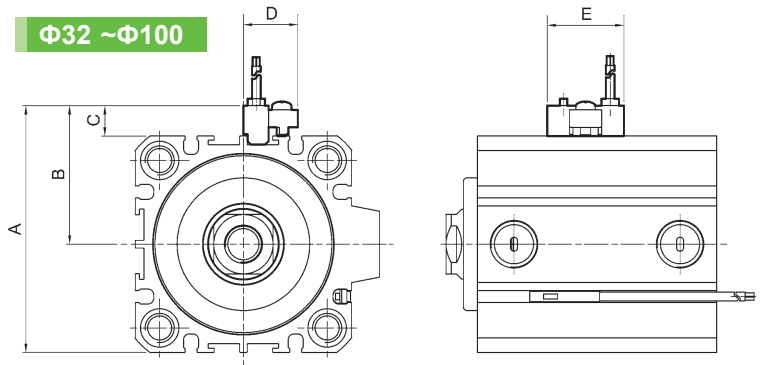


## 感應開關安裝 Installation of sensor switch

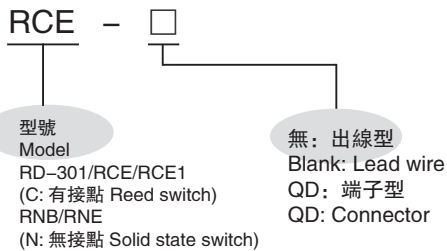
$\Phi 12, \Phi 16$



$\Phi 32 \sim \Phi 100$



## 訂購代碼 Ordering Code



代號 Code 內徑 Tube I.D.	A	B	C	D	E
12	33.5	21.5	8.5	16	22
16	37.5	23	8.5	16	22
20	42.5	25.5	8.5	16	22
25	49	29	9	16	22
32	53	31	9	16	22

代號 Code 內徑 Tube I.D.	A	B	C	D	E
40	61	35	9	16	22
50	71	40	9	16	22
63	84	46.5	9	16	22
80	103	56	9	16	22
100	123	66	9	16	22

## 感應開關固定面 Sensor switch fixed surface

記號說明  
Description

▼ 可裝設 RD-301 溝槽  
groove (switch)

$\Phi 20, \Phi 25$

↓ 進出氣口方向 (Port)  
Input and output direction  
▽ 可裝設 RCE, RCE1 溝槽  
(switch)

$\Phi 32, \Phi 40$

$\Phi 50 \sim \Phi 100$

$\Phi 12, \Phi 16$

