

## 產品特點 Features

- ◇特別適合零泄漏和無孔應用
- ◇現有鋁連接板(AD)和聚苯硫醚復合材料連接板(D)
- ◇提供壓縮空氣接口所需的快速接頭，直流消聲器和安裝支架

- ☆ Use with practically zero leakage present and non-porous applications
- ☆ Available with connection plate in aluminium (AD) and composite PPS(D)
- ☆ Supplies with a push-in connector for compressed air, through-flow silencer and mounting brackets



## 技術規格 Specifications

最大供氣壓力 Air supply pressure. max.	bar	7
噪音 Noise level	dBA	60-65
溫度範圍 Temperature range	°C	-20-80
重量 Weight	g	530-620, 690-780
材料 Material		AL, PPS, NBR, SS

## 產品參數 Technical Parameters

型號 Model	供氣壓力 supply pressure bar	最大真空度 Max. vacuum level -kPa	最大真空流量 Max. vacuum flow l/min	空氣消耗量 Air consumption l/min	重量(PPS材料) Weight(PPS materials) g	最小軟管內徑Φ(2m以內) Min tube inner Φ (within 2m)		
						供氣 Air supply	真空 Vacuum	排氣 Exhaust
FVH40	6	99.8	150	155	675	>6	>8	>10
FVH120		100.8	530	440	837	>9	>15	>19

## 訂購碼 How to Order

FVH40- D - N - A  
① ② ③ ④

### ① 型號 Model

FVH40  
FVH120

### ② 連接板 Connection plate

	供氣口 Air Supply	真空 Vacuum	排氣 Exhaust	材料 Material
D	NPSF 1/8"	G 3/4"	G 3/4"	PPS
B	NPSF 1/8"	NPT 3/4"	NPT 3/4"	PPS
AD	G 1/4"	G 3/4"	G 3/4"	鋁
E	NPT 1/4"	NPT 3/4"	NPT 3/4"	鋁

### ③ 密封材料 Sealing

N	丁腈橡膠 NBR
E	三元乙丙橡膠 EPDM
V	氟橡膠 VITON

### ④ 止回閥 Non-Return Valve

A	有 Yes
-	無 No

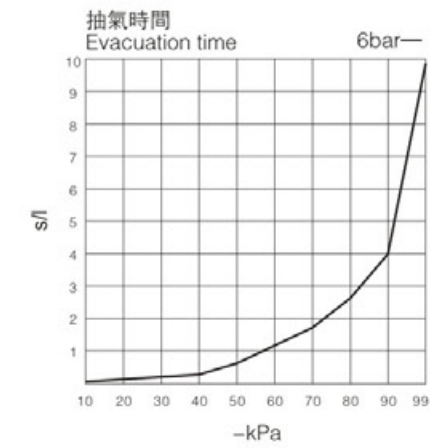
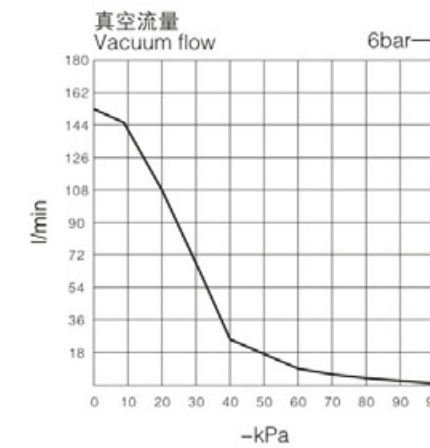
## 不同真空度(-kPa)的真空流量(l/min) Vacuum flow (l/min) at different vacuum levels(-kPa)

型號	-kPa	供氣壓力	空氣消耗量	0	10	20	30	40	50	60	70	80	90	99	最大真空度
FVH40	6 bar		155 l/min	150	145	105	52.5	27.5	20.5	15	8.5	5.5	3	0.2	-99.8kPa
FVH120			440 l/min	530	420	265	141	85	65	45	33	21.5	6	0.5	-100.8kPa

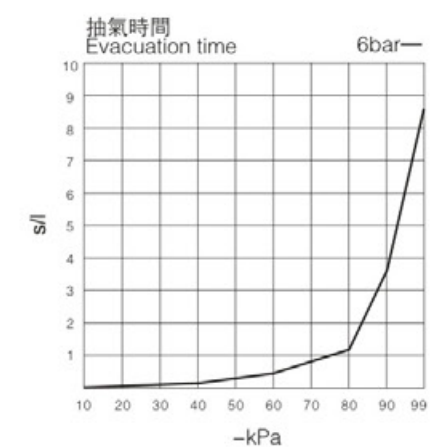
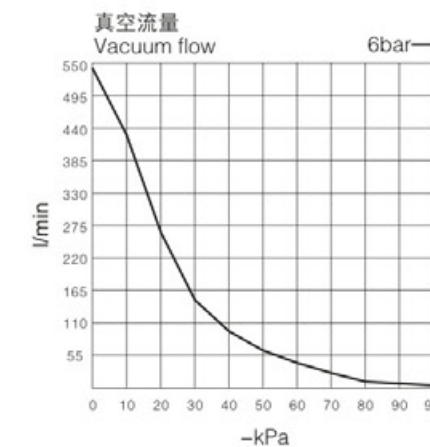
## 不同真空度(-kPa)的抽氣時間(s/l) Evacuation time (s/l) to reach different vacuum levels(-kPa)

型號	-kPa	供氣壓力	空氣消耗量	10	20	30	40	50	60	70	80	90	99	最大真空度
FVH40	6 bar		155 l/min	0.035	0.078	0.18	0.32	0.64	1.3	1.8	2.6	3.9	9.8	-99.8kPa
FVH120			440 l/min	0.02	0.036	0.08	0.14	0.25	0.38	0.66	1.08	3.6	8.5	-100.8kPa

### • FVH40

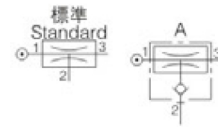
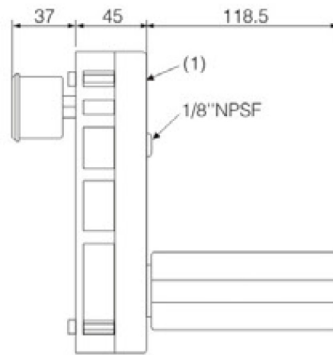
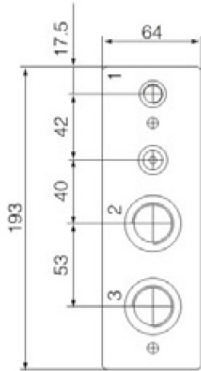


### • FVH120



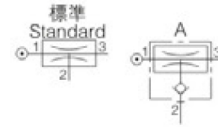
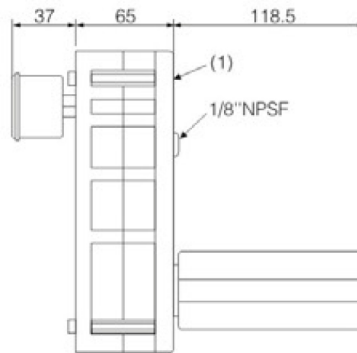
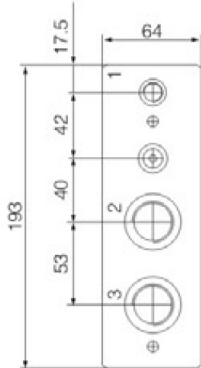
## 外形尺寸(mm) Dimensions (mm)

### •FVH40



	1	2	3
D	NPSF 1/8"	G 3/4"	G 3/4"
B	NPSF 1/8"	NPT 3/4"	NPT 3/4"
AD	G 1/4"	G 3/4"	G 3/4"
E	NPT 1/4"	NPT 3/4"	NPT 3/4"

### •FVH120



	1	2	3
D	NPSF 1/8"	G 3/4"	G 3/4"
B	NPSF 1/8"	NPT 3/4"	NPT 3/4"
AD	G 1/4"	G 3/4"	G 3/4"
E	NPT 1/4"	NPT 3/4"	NPT 3/4"