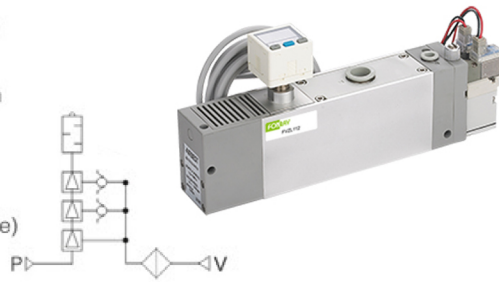


產品特點 Features

- ◇ 採用3級擴壓管，真空流量可增大250%，節省流量20%
 - ◇ 可帶閥，真空用壓力表或壓力開關
 - ◇ 濾芯可更換
 - ◇ 內置真空過濾器及消聲器
 - ◇ 可3個方向安裝(頂、底、側)
- ☆ Adopt 3 levels rise pressure pipe, vacuum flow rate can amplify 250%
 - ☆ Can be with valve, vacuum gauge and vacuum pressure switch
 - ☆ Can replace filter element
 - ☆ Built-in vacuum filter and silencer
 - ☆ Can be installed at 3 directions(top, bottom, side)



真空產生器規格 Specifications

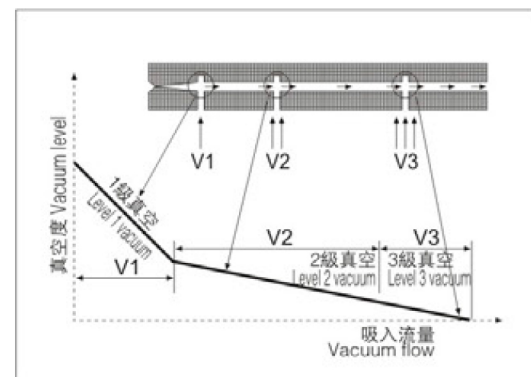
噴嘴孔徑 Nozzle diameter	Φ 1.2mm
最大真空流量 Max vacuum flow rate	100l/min
空氣消耗量 Air consumption	63l/min
最高真空度 Max vacuum pressure	-84kPa
最高使用壓力 Max operating pressure	7bar
供給壓力範圍 Supply pressure range	2-5bar
標準供給壓力 Standard supply pressure	4bar
使用溫度範圍 Operating temperature range	5-50°C

供給閥·破壞閥規格 Supply/Release Valve Specifications

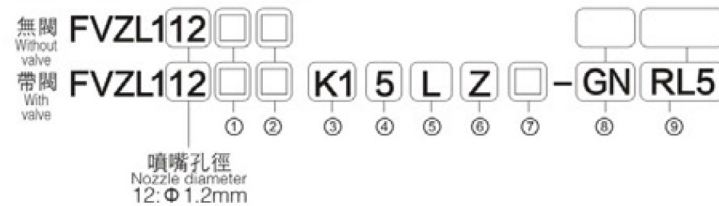
型號 Part Number	SYJ514-□□□
機能 Type of valve actuation	內部先導式N.C Internal pilot type N.C
使用壓力範圍 Operating pressure range	2-5bar
環境及液體溫度 Ambient and fluid temperature	5-50°C
響應時間(0.5MPa時) Response time(for 0.5MPa)	25ms以下 25ms or less
最大動作頻度 Max operating frequency	5Hz
手動操作 Manual operation	非鎖定推壓式，推壓回轉鎖定式螺絲刀操作 Non-locking push type slotted locking type
先導排氣方式 Pilot exhaust type	各自排氣型、集中排氣型 Pilot valve individual exhaust type, Main valve/Pilot valve common exhaust
給油 Lubrication	不需要 Not required
安裝姿勢 Mounting position	自由 Unrestricted
耐衝擊/耐振動 Impact/Vibration resistance	150/30m/s ² 150/30m/s ²
保護構造 Enclosure	防塵 Dust proof

節省能源 Energy saving

3級擴壓管設計 3 Levels rise pressure pipe design



訂購碼 How to order



① 排氣規格 Exhaust specifications

無記號 Nil	內置消聲器 Built-in silencer
P	港口排氣 Port exhaust

② 排氣口螺紋(僅排氣口) Exhaust port thread specification (port exhaust only)

無記號 Nil	Rc1/2
F	G1/2
N	1/2-14NPT
T	1/2-14NPTF

③ 供給閥·破壞閥的組合 Supply valve/Release valve combination

K1	帶供給閥 破壞閥 With supply and release valves
K2	帶供給閥 With supply valve

④ 額定電壓 Rated Voltage

DC規格 DC Specification		AC規格 AC Specification	
5	24V	1	100V
6	12V	2	200V
V	6V	3	110V
S	5V	4	220
R	3V		

⑤ 導線引出方式 Lead wire type

G	直接出線式 Direct lead out type	導線長0.3m Lead wire length 0.3m
L	形插座式 Type plug connector	導線長0.3m Lead wire length 0.3m

⑥ 指示燈過電壓保護回路 Light/Surge voltage suppressor

無記號 Nil	無指示燈及過電壓保護回路 Without light/surge voltage suppressor
S	帶過電壓保護回路 With surge voltage suppressor
Z	帶指示燈及過電壓保護回路 With light/surge voltage suppressor

⑦ 手動操作 Manual override

無記號 Nil	非鎖定推壓式 Non-locking push type
D	推壓回轉鎖定式螺絲刀操作 Slotted locking type

⑧ 真空壓力輸出部 Vacuum pressure sensor

無記號 Nil	無 None
GN	真空用接頭 Rc1/8 Vacuum adapter Rc1/8

⑨ 真空用數字式壓力開關規格 Digital vacuum pressure switch specification RL5

RL5C(-100~100kPa)	
RL5C-02	NPN輸出 NPN Output
RL5C-04	PNP輸出 PNP Output
導線長度2m lead wire length 2m	
RL5V(0~-100kPa)	
RL5V-02	NPN輸出 NPN Output
RL5V-04	PNP輸出 PNP Output
導線長度2m lead wire length 2m	

外形尺寸(mm) Dimensions (mm)

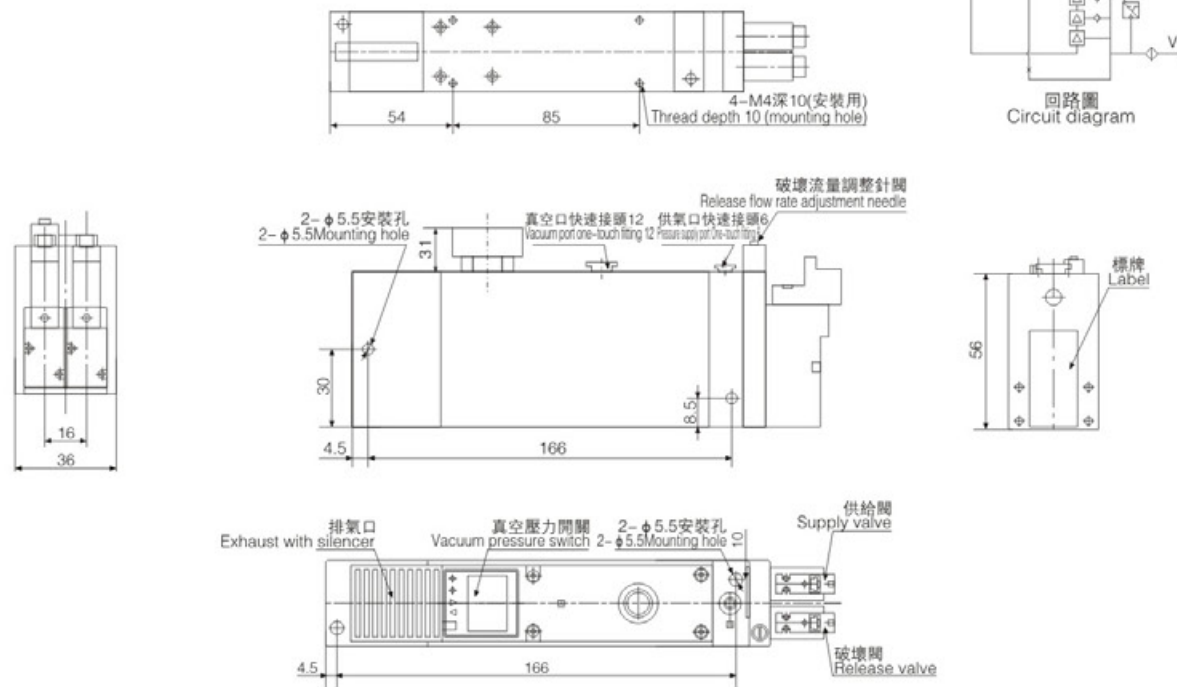
標準 Standard
FVZL112

標準 Standard
FVZL112P

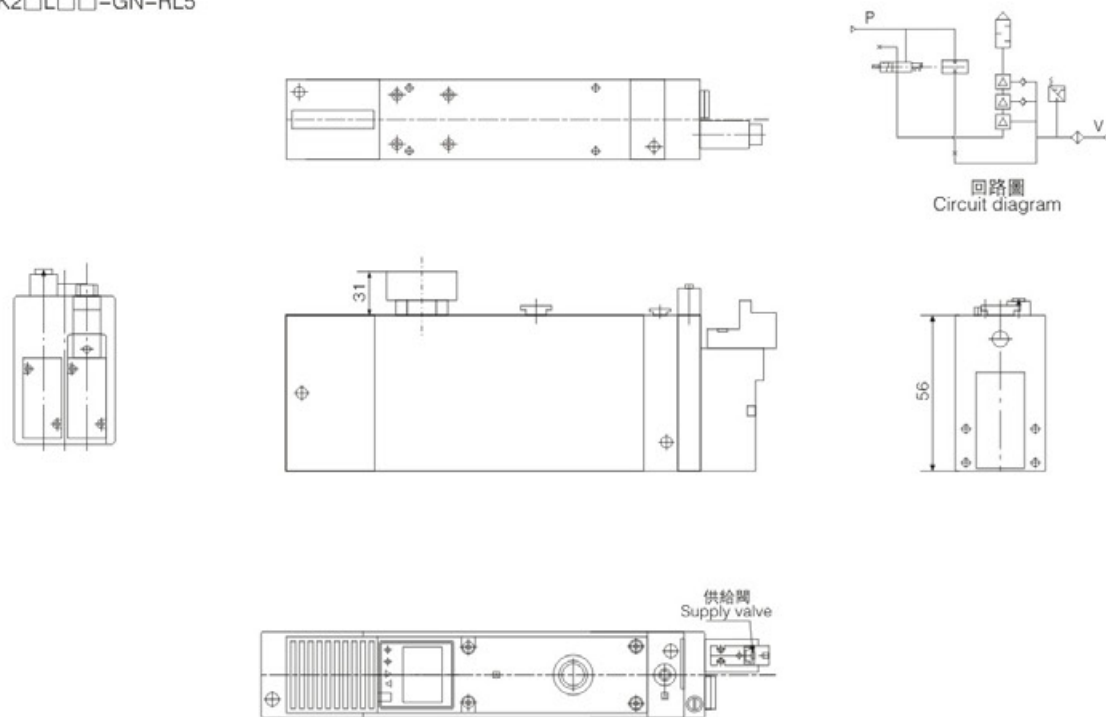
帶真空用接頭 With vacuum adapter
FVZL112-GN

帶真空用數字式壓力開關
With digital vacuum pressure switch
FVZL112-GN-RL5

帶供給閥·破壞閥 With supply valve and release valve
FVZL112-K1□L□□-GN-RL5



帶供給閥 With supply valve
FVZL112-K2□L□□-GN-RL5



•FVZL112

不同真空度(-kPa)的真空流量(l/min) Vacuum flow (l/min) at different vacuum levels(-kPa)

供氣壓力 Air supply pressure bar	空氣消耗量 Air consumption l/min	不同真空度 (-kPa)的真空流量(l/min) Vacuum flow (l/min) at different vacuum levels(-kPa)										最大真空度 Max.vacuum level -kPa
		0	10	20	30	40	50	60	70	80		
4	63	100	65	26	20	18.5	13	8	5	2.8	84	

不同真空度(-kPa)的抽氣時間(s/l)

供氣壓力 Air supply pressure bar	空氣消耗量 Air consumption l/min	不同真空度(-kPa)的抽氣時間(s/l) Evacuation time (s/l) to reach different vacuum levels(-kPa)										最大真空度 Max.vacuum level -kPa
		10	20	30	40	50	60	70	80			
4	63	0.05	0.172	0.4	0.67	1.07	1.63	2.46	3.9	84		

