

產品特點 Features

- ◇ 採用上下重疊兩個3級擴壓管，節省流量和吸入流量都是FVZL112的兩倍
- ◇ 可帶真空壓力開關
- ◇ 可內置消聲器
- ◇ 可兩個方向安裝(底、側)
- ☆ Adopt 2 fluctuation overlap 3 levels rise pressure pipe, the flow rate saving and vacuum flow rate is 2 times of FVZL112
- ☆ Can be with vacuum pressure switch
- ☆ Built-in silencer
- ☆ Can be installed at 2 directions(bottom,side)



訂購碼 How to order

FVZL 212 -

① ② ③ ④

① 噴嘴孔徑
Nozzle diameter

12	Φ 1.2mm
----	---------

② 排氣規格
Exhaust specifications

無記號	內置消聲器
Nil	Built-in silencer
P	通口排氣
	Port exhaust

④ 真空用數字式壓力開關規格
Digital vacuum pressure switch specifications
RL5

RL5C(-100~100kPa)		
RL5C-02	NPN 輸出	導線長度2m Lead wire length 2m
RL5C-04	PNP 輸出	
RL5V(0~-100kPa)		
RL5V-02	NPN 輸出	導線長度2m Lead wire length 2m
RL5V-04	PNP 輸出	

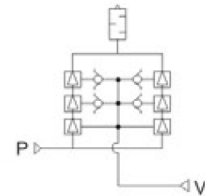
③ 真空壓力檢出部
Vacuum pressure sensor

無記號	無
Nil	None
GN	接頭 Rc1/8 Adaptor Rc1/8

技術規格 Specifications

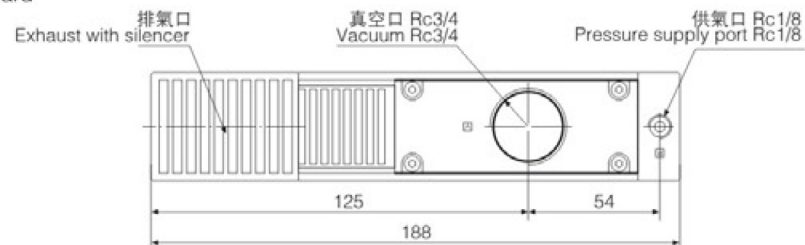
噴嘴孔徑	Nozzle diameter	Φ 1.2mm x 2
最大真空流量	Max.vacuum flow rate	200 l/min
空氣消耗量	Air consumption	126 l/min
最高真空度	Max.vacuum pressure	-84kPa
最高使用壓力	Max.operating pressure	7bar
供給壓力範圍	Supply pressure range	2~5bar
標準供給壓力	Standard supply pressure	4bar
使用溫度範圍	Operating temperature range	5~50℃

圖形符號 Symbol

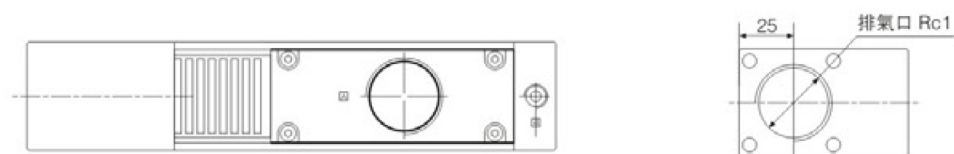


外形尺寸(mm) Dimensions(mm)

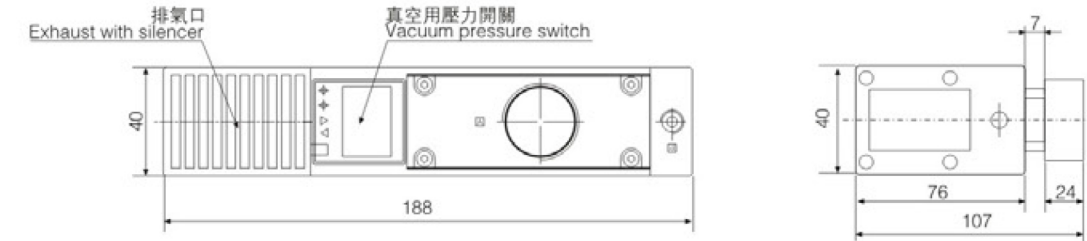
標準 Standard
FVL212



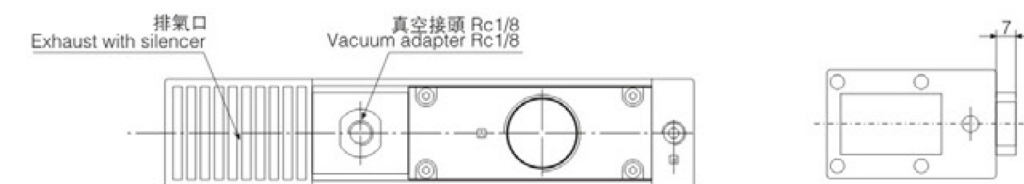
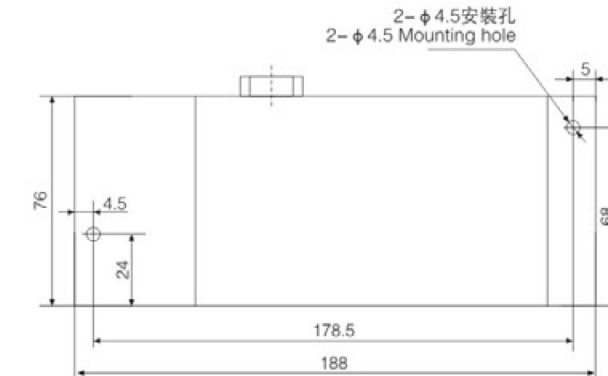
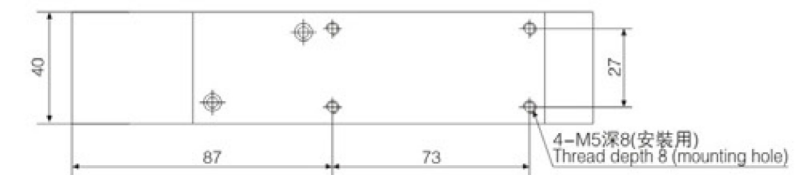
通口排氣 Port exhaust
FVZL212P



帶真空用數字式壓力開關 With digital vacuum pressure switch
FVZL212-GN-RL5



帶真空用接頭 With vacuum adapter
FVZL212-GN



• FVZL212

不同真空度(-kPa)的真空流量(l/min) Vacuum flow (l/min) at different vacuum levels(-kPa)

供氣壓力 Air supply pressure bar	空氣消耗量 Air consumption l/min	不同真空度 (-kPa)的真空流量(l/min) Vacuum flow (l/min) at different vacuum levels(-kPa)									最大真空度 Max.vacuum level -kPa
		0	10	20	30	40	50	60	70	80	
4	125	200	150	52	40	30	25	15	8	3	84

不同真空度(-kPa)的抽氣時間(s/l) Evacuation time (s/l) to reach different vacuum levels(-kPa)

供氣壓力 Air supply pressure bar	空氣消耗量 Air consumption l/min	不同真空度(-kPa)的抽氣時間(s/l) Evacuation time (s/l) to reach different vacuum levels(-kPa)								最大真空度 Max.vacuum level -kPa
		10	20	30	40	50	60	70	80	
4	125	0.011	0.076	0.246	0.415	0.646	0.98	1.52	2.46	84

