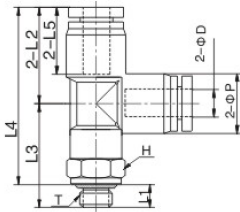


### MPD



MPD  
T 型分支螺紋三通



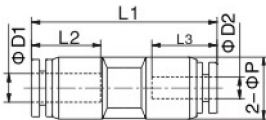
### 公制 Metric-BSPT(R)

型號 Model	ΦD	T	L1	L2	L3	L4	L5	ΦP	對邊 H
MPD3-M3	3	M3x0.5	3	12.5	15.5	25	10.5	7	8
MPD3-M5		M5x0.8	3.5		16	25			8
MPD3-M6		M6x1.0	4		16.5	25			8
MPD4-M3	4	M3x0.5	3	14.5	15.5	27	11.5	9	8
MPD4-M5		M5x0.8	3.5		16	27			8
MPD4-M6		M6x1.0	4		16.5	27			8
MPD4-01		R 1/8	7.5		19.5	30			10
MPD6-M5	6	M5x0.8	3.5	16.5	16	29	12.5	11	8
MPD6-M6		M6x1.0	4		16.5	29			8
MPD6-01		R 1/8	7.5		19.5	32			10

### MPG



MPG  
減徑直通



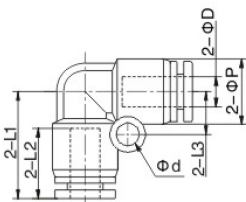
### 公制 Metric-BSPT(R)

型號 Model	ΦD1	ΦD2	L1	L2	L3	ΦP
MPG4-3	4	3	27.5	11.5	10.5	9
MPG6-3	6	3	27.5	12.5	10.5	11
MPG6-4	6	4	27.5	12.5	11.5	11

### MPV



MPV  
聯管直角彎頭



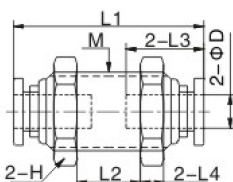
### 公制 Metric-BSPT(R)

型號 Model	ΦD	L1	L2	L3	ΦP	φd
MPV3	3	12.5	10.5	5	7	3.2
MPV4	4	15	11.5	6	9	3.2
MPV6	6	16.5	12.5	6.5	11	3.2

### MPM



MPM  
隔板聯管直通



### 公制 Metric-BSPT(R)

型號 Model	ΦD	M	L1	L2	L3	L4	H
MPM3	3	M8x0.75	21.5	7.5	10.5	2	10
MPM4	4	M10x1.0	24.5	7.5	11.5	3	12
MPM6	6	M12x1.0	26	7	12.5	3.5	14