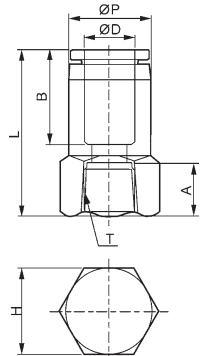


EPCF



EPCF 內螺紋直通
Straight (Female)



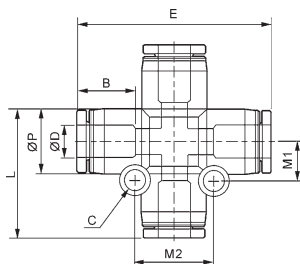
公制 Metric-BSPT(R)

型號 Model	ΦD	T (Thread)	L	A	B	H	ΦP	孔板 Orifice	單價 Unit Price
EPCF4-M5	4	M5×P0.8			15		10		35
EPCF4-01		PT1/8	24	8		14		3	37
EPCF4-02		PT1/4	26.2	10		17		3	53
EPCF6-M5	6	M5×P0.8			15		12		40
EPCF6-01		PT1/8	24.8	8		14		4.5	40
EPCF6-02		PT1/4	24	10		17		4.5	55
EPCF6-03		PT3/8	28.4	11		21		4.5	69
EPCF6-04		PT1/2							95
EPCF8-01	8	PT1/8	26	8	18	14	14	5.8	46
EPCF8-02		PT1/4	28.2	10		17		6	58
EPCF8-03		PT3/8	29.8	11		21		6	79
EPCF8-04		PT1/2	31.7	14		24		8	99
EPCF10-01	10	PT1/8	28.6	8	22	17	17	8	66
EPCF10-02		PT1/4	32.4	10		17		8	66
EPCF10-03		PT3/8	33.2	11		21		8	89
EPCF10-04		PT1/2	35	14		24		8	106
EPCF12-02	12	PT1/4	33.5	10	22	21	20	10	102
EPCF12-03		PT3/8	34.5	11		21		10	102
EPCF12-04		PT1/2	36	14		24		10	116

EPZA



EPZA 十字四通
Cross



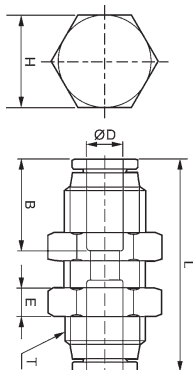
公制 Metric

型號 Model	ΦD	ΦP	M1	E	B	孔板 Orifice	單價 Unit Price
EPZA-4	4	11	7.2	35.6	15	3	150
EPZA-6	6	13	7.8	38.2	15	5	150
EPZA-8	8	14.4	9.1	45	18	6	150
EPZA-10	10	18.4	11.8	57.2	22	8	150
EPZA-12	12	21	14	58.6	22	10	

EPM



EPM隔板直通



公制 Metric

型號 Model	ΦD	T	L	H	B	孔板 Orifice	單價 Unit Price
EPM4	4	M12×P1	30	14	15	3	68
EPM6	6	M14×P1	31.5	17	15	5	74
EPM8	8	M16×P1	34.5	19	18	6	76
EPM10	10	M20×P1	41	24	22	8	130
EPM12	12	M22×P1	44.8	27	22	10	200