

特點 Features

- *特殊的接管設計可接PU管、PE管和尼龍管，適用範圍其極廣泛。
- *採用日本進口耐用油密封圈，密封性能佳。
- *使用更純的原料來生產我們的接頭以增加它的硬度，使不易破裂且增加耐用度。
- *Special design can be applied in PU, PE and Nylon tube.
- *The material of seal-ring is Japanese viton. It with good seal fuction.
- *It made by better material to increase its firmness.

詳細規格 Specification

使用流體 Working Medium	空氣、真空、水、油 (可在無腐蝕介質下使用) Air, Vacuum, Water, Oil
使用壓力範圍 Working-pressure Range	0~11kgf/cm ² (0~1.1MPa)
使用環境及流體 Operating Temperature	-10~60°C
耐壓 Pressure resistance	1.1MPa
使用軟管 Tube	PU, PE 管及尼龍管 PU, PE tube and nylon tube
密封圈材質 Seal-ring	NBR

訂購代碼 Ordering Code

EPMF **8** - **01** **0**

型號 Model 氣管外徑 Tube outer dia 螺紋形式及尺寸 Thread size 套管顏色，電鍍 Sleeve color, plating

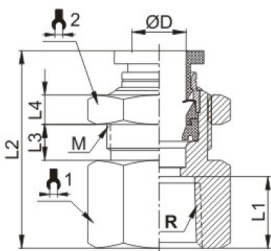
Metric 公制	Size 尺寸	R(BSPT)	NPT	G(BSPP)
Code 代號	Dia 直徑	M5×0.8P	U:10-32UNF	G 01:1/8
4	Φ4	M6×1.0P	N 01:1/8	G 02:1/4
6	Φ6	01:1/8	N 02:1/4	G 03:3/8
8	Φ8	02:1/4	N 03:3/8	G 04:1/2
10	Φ10	03:3/8	N 04:1/2	
12	Φ12	04:1/2		
16	Φ16			

套管顏色，電鍍
NPT: 黑色
R, G: 藍色
N: 電鍍鍍
Sleeve color, plating
NPT: Black
R, G: Blue
N: Nickel plating

EPMF



EPMF
內螺紋隔板直通



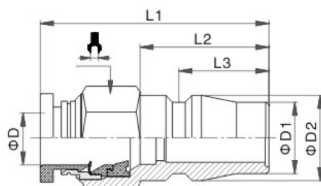
公制 Metric-BSPT(R)

型號 Model	ΦD	R	L1	L2	L3	L4	M	1	2
EPMF4-M5	4	M5	6	22	5	3.5	M12*1.0	14	14
EPMF4-01		R 1/8	8.5	24.5	5	3.5	M12*1.0	14	14
EPMF4-02		R 1/4	11	27	5	3.5	M12*1.0	17	14
EPMF6-01	6	R 1/8	8.5	25.5	5.5	4	M14*1.0	17	17
EPMF6-02		R 1/4	11	28.5	5.5	4	M14*1.0	17	17
EPMF6-03		R 3/8	11.5	29	5.5	4	M14*1.0	20	17
EPMF6-04	R 1/2	14	31.5	5.5	4	M14*1.0	24	17	
EPMF8-01	8	R 1/8	8.5	27.5	5.5	4.5	M16*1.0	19	19
EPMF8-02		R 1/4	11	30	5.5	4.5	M16*1.0	19	19
EPMF8-03		R 3/8	11.5	30.5	5.5	4.5	M16*1.0	20	19
EPMF8-04	R 1/2	14	33	5.5	4.5	M16*1.0	24	19	
EPMF10-01	10	R 1/8	8.5	29	7	5	M18*1.0	21	21
EPMF10-02		R 1/4	11	32.5	7	5	M18*1.0	21	21
EPMF10-03		R 3/8	11.5	33	7	5	M18*1.0	21	21
EPMF10-04	R 1/2	14	35.5	7	5	M18*1.0	24	21	
EPMF12-01	12	R 1/8	8.5	31.5	9	5	M22*1.0	27	27
EPMF12-02		R 1/4	11	35	9	5	M22*1.0	27	27
EPMF12-03		R 3/8	11.5	35.5	9	5	M22*1.0	27	27
EPMF12-04	R 1/2	14	38	9	5	M22*1.0	27	27	

EPCP



EPCP
快插轉換接頭



公制 Metric-BSPT(R)

型號 Model	ΦD	ΦD1	ΦD2	L1	L2	L3	1
EPCP4-P	4	11	13	33.5	20	14	14
EPCP6-P	6	11	13	34.5	20	14	14
EPCP8-P	8	11	13	35.5	20	14	14
EPCP10-P	10	11	13	37.5	20	14	17
EPCP12-P	12	11	13	44	20	14	21
EPCP14-P	14	11	13	44	20	14	22
EPCP16-P	16	11	13	46	20	14	24
EPCP5/32-P	5/32	11	13	33.5	20	14	14
EPCP3/16-P	3/16	11	13	34	20	14	14
EPCP1/4-P	1/4	11	13	34.5	20	14	14
EPCP5/16-P	5/16	11	13	35.5	20	14	14
EPCP3/8-P	3/8	11	13	37.5	20	14	17
EPCP1/2-P	1/2	11	13	44	20	14	21