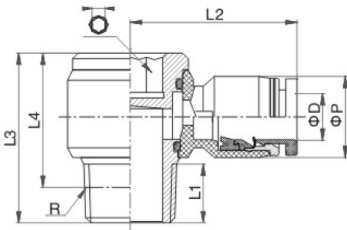


### EPOL-I



EPOL-I  
I型回轉內六角



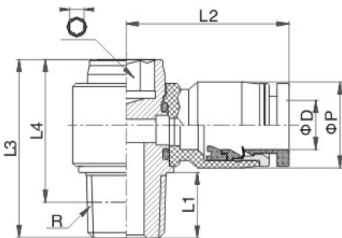
### 公制 Metric-BSPT(R)

型號 Model	ΦD	R	L1	L2	L3	L4	ΦP	○I
EPOL4-M5-I	4	M5	3.5	20	16.5	13	11	4
EPOL4-01-I		R 1/8	7	23	22.5	18.5	11	6
EPOL4-02-I		R 1/4	9.5	25	25	19	11	8
EPOL6-M5-I	6	M5	3.5	21.5	16.5	13	13	4
EPOL6-01-I		R 1/8	7	23	22.5	18.5	13	6
EPOL6-02-I		R 1/4	9.5	25	25	19	13	8
EPOL6-03-I	8	R 3/8	10.5	27	30.5	24	13	10
EPOL8-01-I		R 1/8	7	26.5	22.5	18.5	14.5	6
EPOL8-02-I		R 1/4	9.5	29	25	19	14.5	8
EPOL8-03-I	10	R 3/8	10.5	30.5	30.5	24	14.5	10
EPOL10-01-I		R 1/8	7	29	22.5	18.5	18.5	6
EPOL10-02-I		R 1/4	9.5	31	25	19	18.5	8
EPOL10-03-I	12	R 3/8	10.5	32	30.5	24	18.5	10
EPOL10-04-I		R 1/2	14	34.5	37	29	18.5	12
EPOL12-02-I		R 1/4	9.5	30.5	25	19	21	8
EPOL12-03-I	14	R 3/8	10.5	35	30.5	24	21	10
EPOL12-04-I		R 1/2	14	36.5	37	29	21	12
EPOL14-04-I	16	R 1/2	14	39	37	29	26	12
EPOL16-04-I	16	R 1/2	14	39	37	29	26	12

### EPOL-II



EPOL-II  
II型回轉內六角



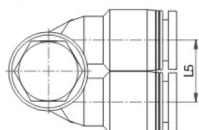
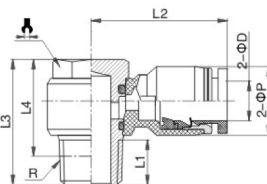
### 公制 Metric-BSPT(R)

型號 Model	ΦD	R	L1	L2	L3	L4	ΦP	○I
EPOL4-M5-II	4	M5	3.5	20	17.5	14	11	4
EPOL4-M6-II		M6	4	20	18	14	11	4
EPOL4-01-II		R 1/8	8	20	21	17	11	4
EPOL6-01-II	6	R 1/8	8	23	24	20	13	5
EPOL6-02-II		R 1/4	11	23	27	21	13	5
EPOL8-01-II	8	R 1/8	8	27	27	23	14.5	8
EPOL8-02-II		R 1/4	11	27	30	24	14.5	8
EPOL8-03-II		R 3/8	12	27	31	24.5	14.5	8
EPOL10-01-II	10	R 1/8	8	31	31	27	18.5	10
EPOL10-02-II		R 1/4	11	31	34	28	18.5	10
EPOL10-03-II		R 3/8	12	31	35	28.5	18.5	10
EPOL10-04-II	12	R 1/2	15	31	38	29.5	18.5	10
EPOL12-01-II		R 1/8	8	36.5	35	31	21	12
EPOL12-02-II		R 1/4	11	36.5	38	32	21	12
EPOL12-03-II	12	R 3/8	12	36.5	39	32.5	21	12
EPOL12-04-II		R 1/2	15	36.5	42	33.5	21	12

### EPA



EPA  
回轉三通



### 公制 Metric-BSPT(R)

型號 Model	ΦD	R	L1	L2	L3	L4	L5	ΦP	⊥
EPA4-M5	4	M5	4	22.5	17	13	11	11	8
EPA6-01	6	R 1/8	7	24	24	20	13	13	12
EPA8-01	8	R 1/8	7	26	24	20	14.5	14.5	12
EPA8-02		R 1/4	9.5	28	26.5	20.5	14.5	14.5	14
EPA10-02	10	R 1/4	9.5	31	26.5	20.5	18.5	18.5	14
EPA10-03		R 3/8	10.5	33	32	25.5	18.5	18.5	19
EPA12-03	12	R 3/8	10.5	34	32	25.5	21	21	19
EPA12-04		R 1/2	14	36.5	39	31	21	21	24
EPA6-G01	6	R 1/8	5	24	23.5	23.5	13	13	12
EPA8-G01	8	R 1/8	5	26	23.5	23.5	14.5	14.5	12
EPA8-G02		R 1/4	7.5	28	27	27	14.5	14.5	14
EPA10-G02	10	R 1/4	7.5	31	27	27	18.5	18.5	14
EPA10-G03		R 3/8	7.5	33	32	32	18.5	18.5	19
EPA12-G03	12	R 3/8	7.5	34	32	32	21	21	19
EPA12-G04		R 1/2	10	36.5	39	39	21	21	24