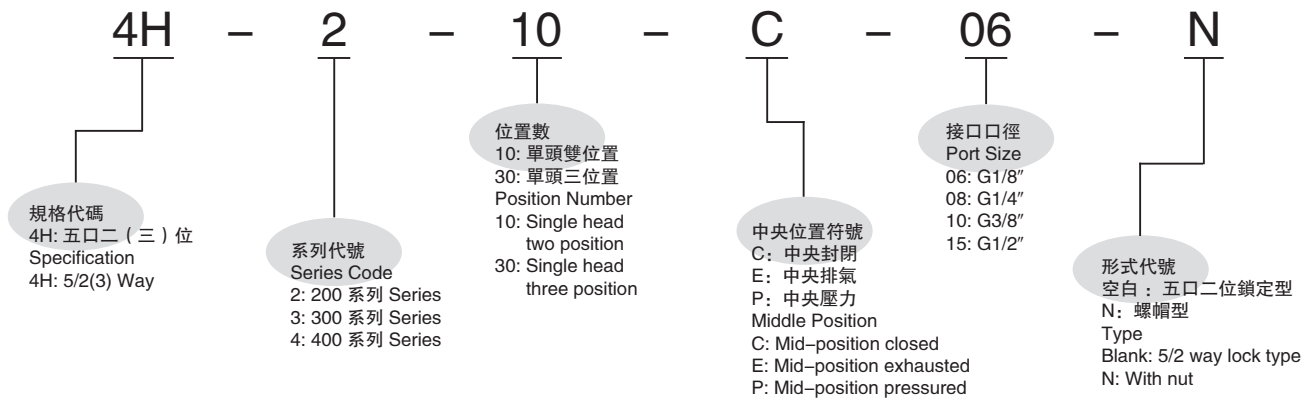




訂購代碼 Ordering Code

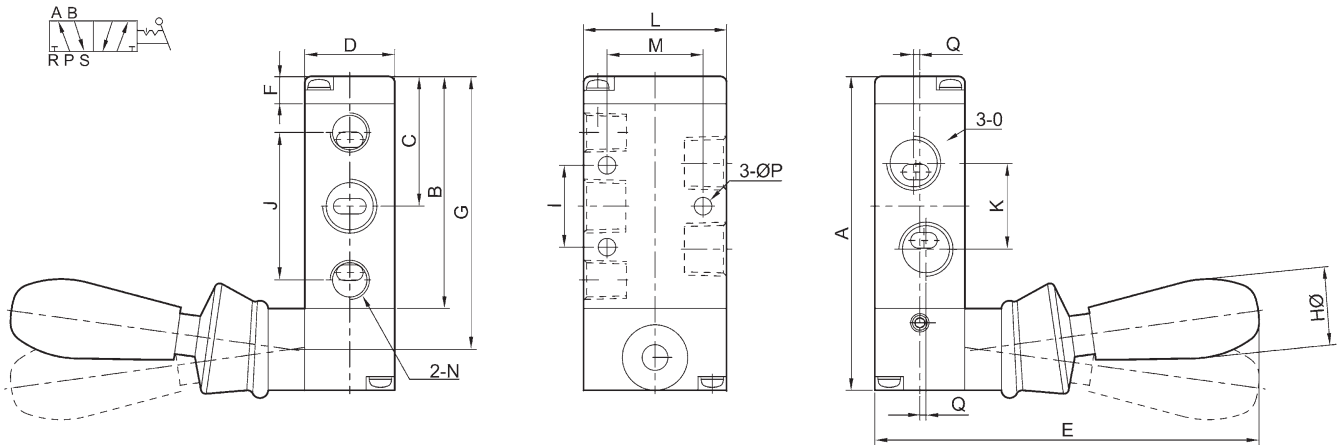


規格 Specification

型號 Model	4H210-06	4H210-08	4H230-08	4H310-08	4H310-10	4H330-10	4H410-15	4H430-15
工作介質 Working Medium	經40微米過濾的空氣, 40 Micron Filtered Air							
動作方式 Operation	直動式 Direct							
有效截面積 Effective Cross Section Area	14mm ² (CV=0.78)	16mm ² (CV=0.89)	12mm ² (CV=0.67)	25mm ² (CV=1.4)	30mm ² (CV=1.68)	18mm ² (CV=1.00)	50mm ² (CV=2.79)	30mm ² (CV=1.68)
接管口徑 Port Size	進氣 = 出氣 = 排氣 Inlet, Outlet, Exhaust Port = G1/8"	進氣 = 出氣 Inlet, Outlet = G1/4" 排氣 Exhaust Port = G1/8"	進氣 = 排氣 = 出氣 Inlet, Outlet, Exhaust Port = G1/4"	進氣 = 排氣 = 出氣 Inlet, Outlet, Exhaust Port = G1/4"	進氣 = 出氣 = G3/8" Inlet, Outlet = G3/8" 排氣 Exhaust Port = G1/4"		進氣 = 出氣 = 排氣 = G1/2" Inlet, Outlet, Exhaust Port = G1/2"	
使用壓力範圍 Working Pressure	0 ~ 0.8MPa							
使用溫度範圍 Working Temperature	0 ~ 60°C							

4H 系列 Series

手動閥
Manual Valve
4H



尺寸表 Dimension

型號 Model	4H210-08(06)	4H230-08(06)-S (自動復位) (Automatic Rebound)	4H310-10(08)	4H330-10(08)-S (自動復位) (Automatic Rebound)	4H410-15	4H430-15-S (自動復位) (Automatic Rebound)
符號 Symbol	4H230-08(06)-L		4H330-10(08)-L		4H430-15-L	
A	76	95	96	115	126	147
B	56.5	75.5	72	91	102	123
C	31.5	31.5	40	60	55.5	76.5
D	22	22	27	27	34	34
E	95	95	100	100	110	110
F	6.5	6.5	7.5	7.5	7.5	7.5
G	66.5	85.5	84	103	114	135
H	18	18	18	18	18	18
I	20	20	24	24	28	28
J	36	36	45	45	63	63
K	21	21	24	24	36	36
L	35	35	40	40	50	50
M	21	21	27	27	35	35
N	G1/8	G1/8	G3/8	G3/8	G1/2	G1/2
O	G1/4(G1/8)	G1/4(G1/8)	G3/8(G1/4)	G3/8(G1/4)	G1/2	G1/2
P	4.3	4.3	4.3	4.3	5.5	5.5
Q	1.5(-)	1.5(-)	2(-)	2(-)	-	-